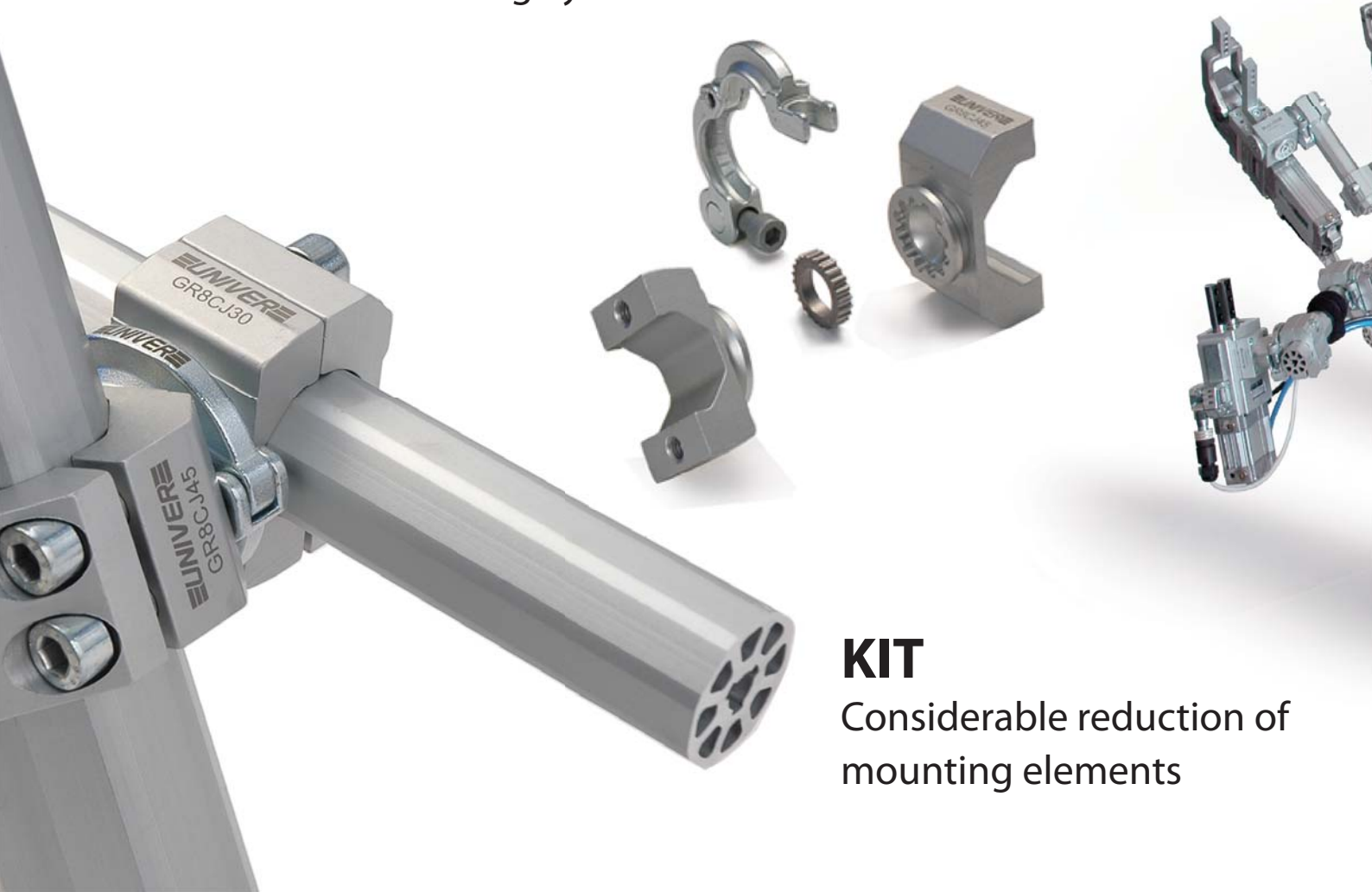


# GR8

Modular Tooling System



# GR8 Modular Tooling System



## KIT

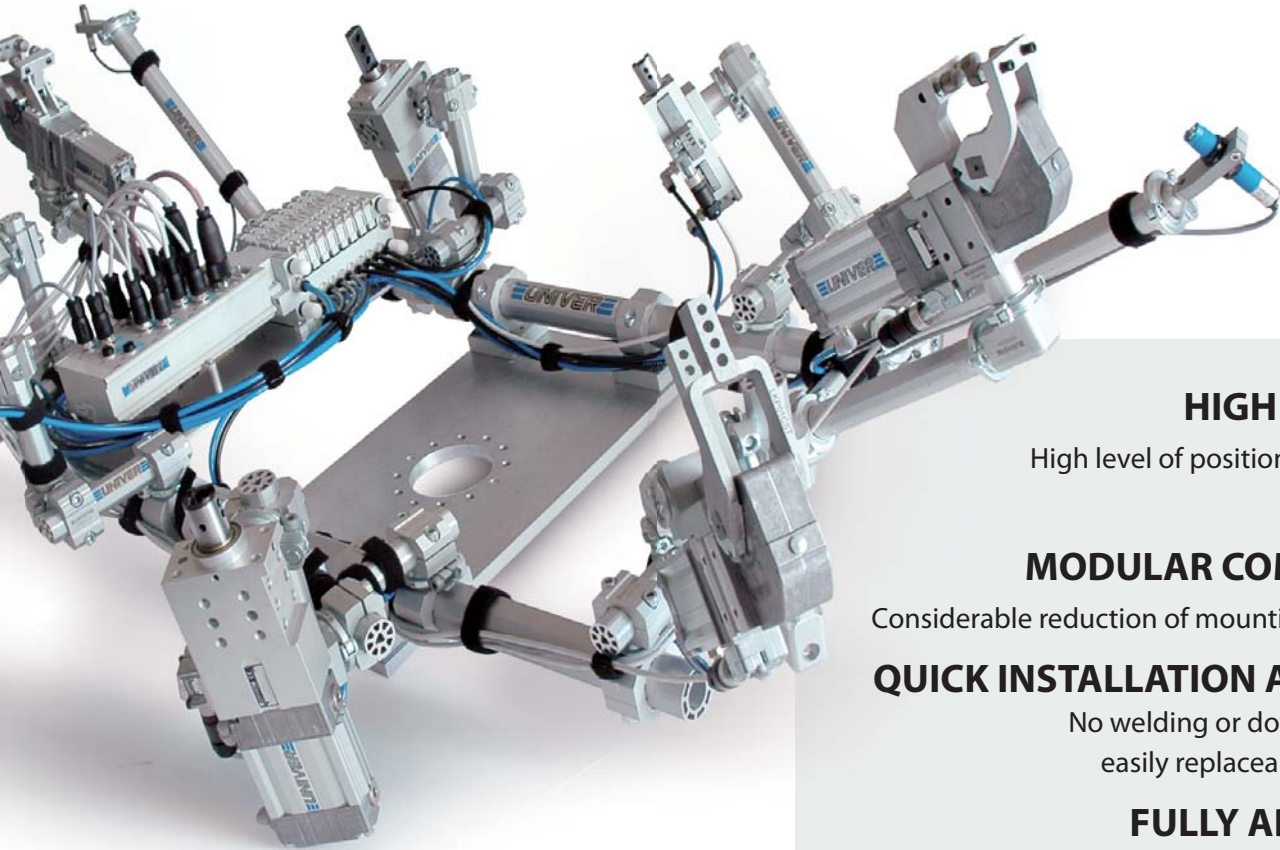
Considerable reduction of mounting elements

Ø 30 - 45 - 70 mm booms

Maximum stiffness and minimum weight



PATENT PENDING



## **HIGH PRECISION**

High level of positional repeatability;  
low deflection

## **MODULAR COMPONENTS**

Considerable reduction of mounting components

## **QUICK INSTALLATION AND SET UP**

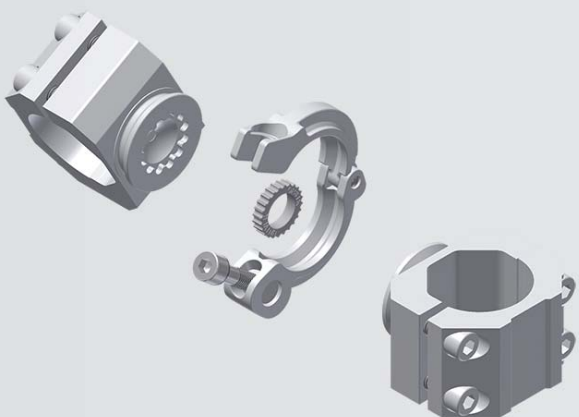
No welding or doweling required,  
easily replaceable components

## **FULLY ADJUSTABLE**

Unlimited orientation in space and free configuration

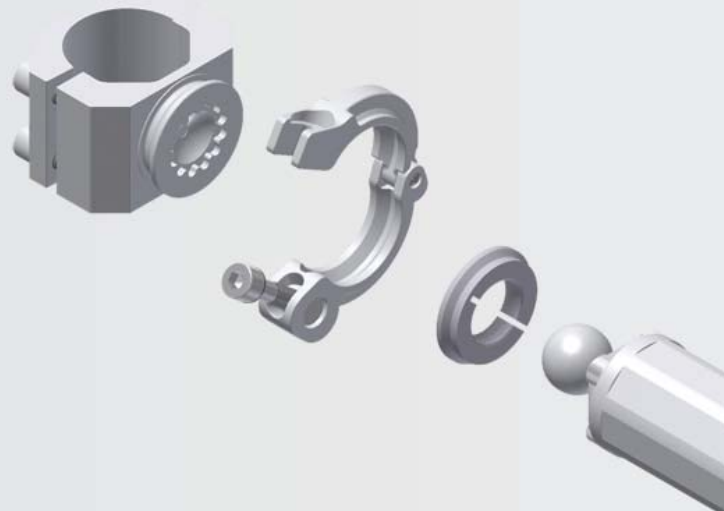
### **Locking ring**

Precise and efficient system to guarantee a high level of positional accuracy



### **Ball mounting**

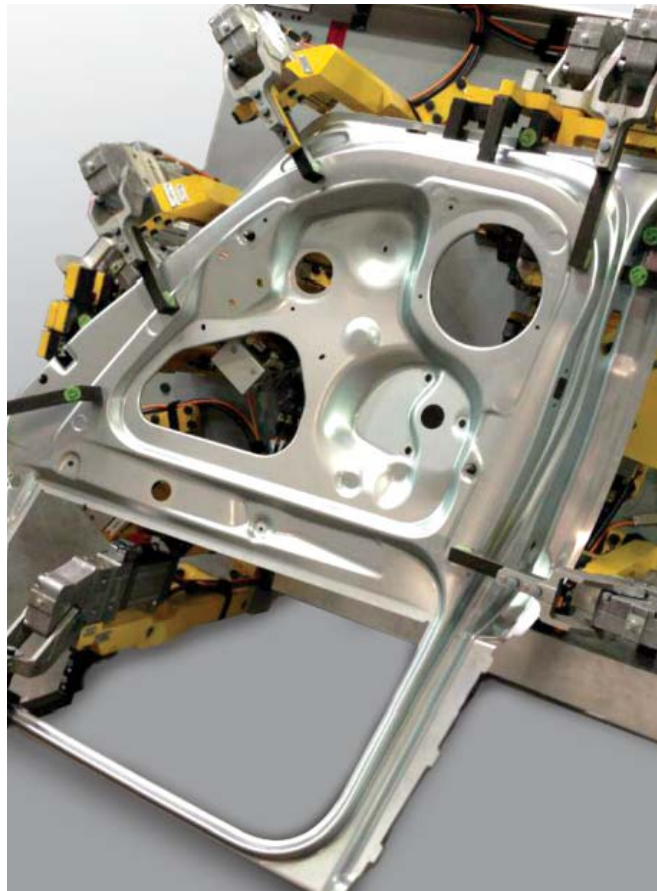
Unlimited swivel rotation





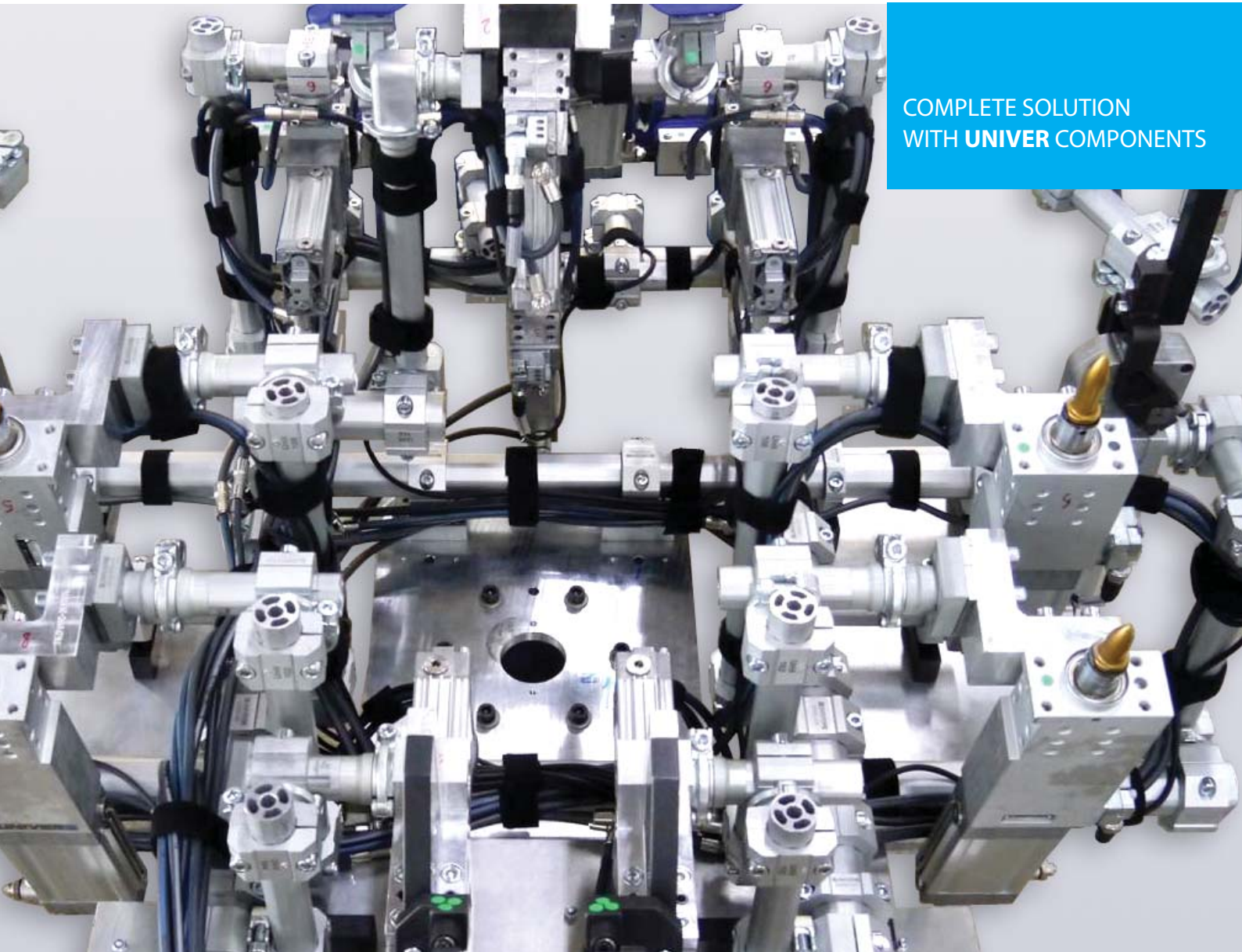
# GR8

GR8 applications and details  
of the components

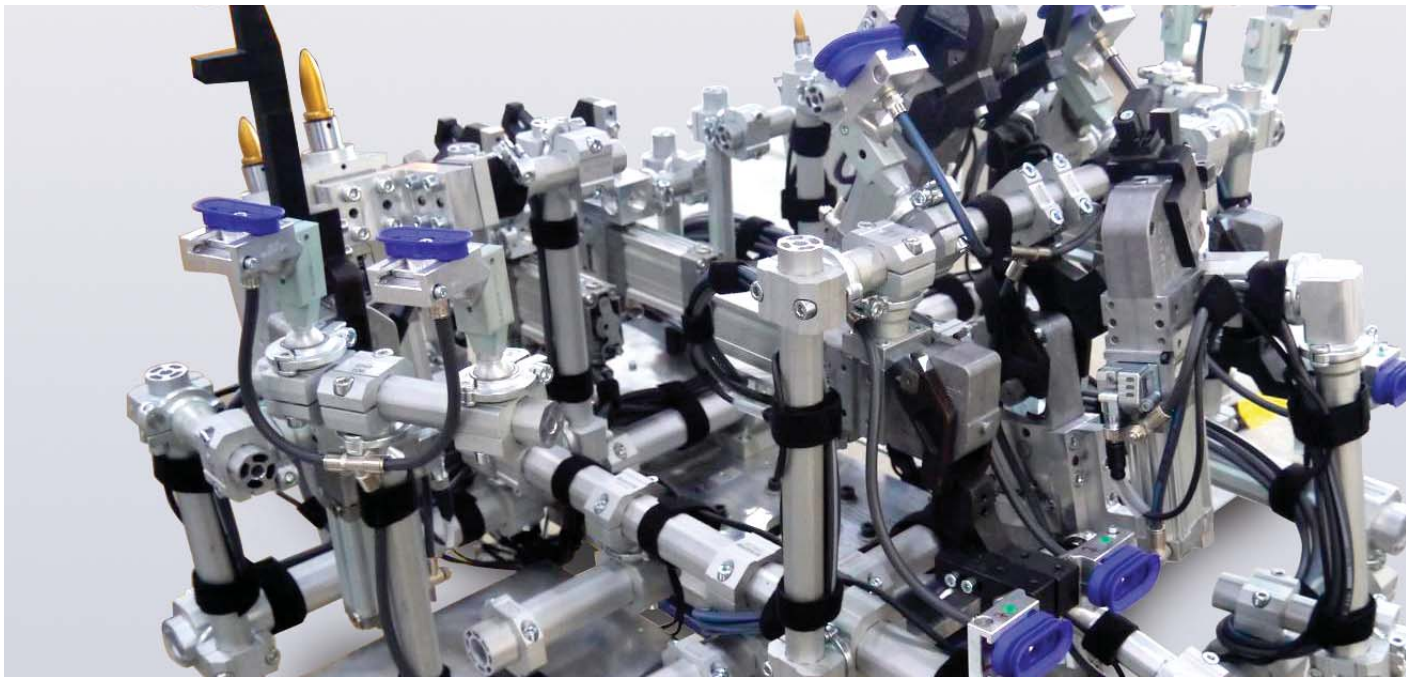
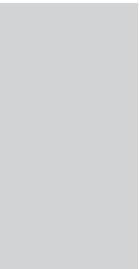







Unlimited and complex configurations  
Weight-optimized standard components and brackets  
Quick installation and adjustment

















COMPLETE SOLUTION  
WITH **UNIVER** COMPONENTS



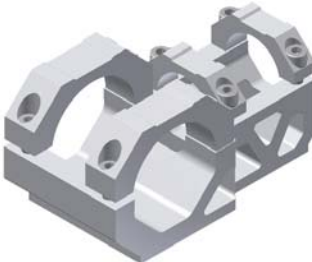



Booms			Inserts	Locking ring
<p>■ <b>GR8B30S6000</b> Ø 30 mm Octagonal boom</p> 	<p>■ <b>GR8B456000</b> Ø 45 mm Octagonal boom</p> 	<p>■ <b>GR8B706000</b> Ø 70 mm Octagonal boom</p> 	<p>■ <b>GR8IK</b> Interlocking key insert</p> 	<p>■ <b>GR8LHD</b> Locking ring</p> 

Booms end caps		
<p>■ <b>GR8C30</b> 30 mm boom end cap</p> 	<p>■ <b>GR8C45</b> 45 mm boom end cap</p> 	<p>■ <b>GR8C70</b> 70 mm boom end cap</p> 

Mounts			
<p>■ <b>GR8CJ30D</b> Cross Joint 30</p> 	<p>■ <b>GR8RJ30D</b> Round Joint 30</p> 	<p>■ <b>GR8CJ45D</b> Cross Joint 45</p> 	<p>■ <b>GR8RJ45D</b> Round Joint 45</p> 
<p>■ <b>GR8CJ70D</b> Cross Joint 70</p> 	<p>■ <b>GR8RJ70</b> Round Joint 70</p> 	<p>■ <b>GR8HD4530V</b> Joint 45-30</p> 	<p>■ <b>GR8HD4545V</b> Joint 45-45</p> 
<p>■ <b>GR8HD7045</b> Joint 70-45</p> 	<p>■ <b>GR8HD7070</b> Joint 70-70</p> 	<p>■ <b>GR8CM4530</b> Coplanar Mount 45-30</p> 	<p>■ <b>GR8CM4545</b> Coplanar Mount 45-45</p> 



Mounts

<p>■ <b>GR8CM7045</b> Coplanar Mount 70-45</p> 	<p>■ <b>GR8CM7070</b> Coplanar Mount 70-70</p> 	<p>■ <b>GR8SCI30D</b> Interlocking adapter 30</p> 	<p>■ <b>GR8ECI45D</b> Interlocking adapter 45</p> 
--	--	--	---

Angular Mounts

<p>■ <b>GR8EOAD</b> Orientable angle adapter</p> 	<p>■ <b>GR8EOAD45</b> Orientable angle adapter</p> 	<p>■ <b>GR8SM3030</b> Edge mounting element 30-30</p> 	<p>■ <b>GR8SM4545</b> Edge mounting element 45-45</p> 
<p>■ <b>GR8A30</b> Edge mount with an orientable side for 30 mm booms</p> 	<p>■ <b>GR8A45</b> Edge mount with an orientable side for 45 booms</p> 	<p>■ <b>GR8A3045</b> 45° Mounting element for 30 mm booms</p> 	<p>■ <b>GR8SM3045</b> Mounting element male-female for 30 mm booms</p> 

Base Mounts

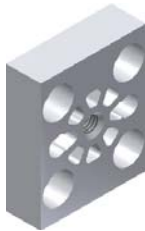
<p>■ <b>GR8BB30D</b> Base plate bracket 30</p> 	<p>■ <b>GR8BB45D</b> Base plate bracket 45</p> 	<p>■ <b>GR8BB70</b> Base plate bracket 70</p> 	<p>■ <b>GR8BL45</b> Base linear plate 45</p> 
<p>■ <b>GR8BC30</b> Base connector 30</p> 	<p>■ <b>GR8BC45</b> Base connector 45</p> 	<p>■ <b>GR8BC70</b> Base connector 70</p> 	<p>■ <b>GR8BL70</b> Base linear plate 70</p> 

Mounting adapters

■ **GR8SR40**  
Rear mount plate for 40 clamps



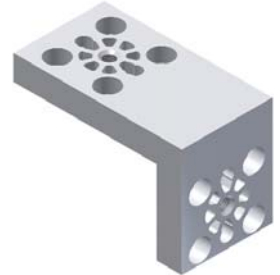
■ **GR8SR50**  
Rear mount plate for retractable locating pin units LCP50



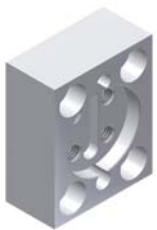
■ **GR8SR50M8**  
Rear mount plate with M8 threads



■ **GR8SS50**  
Side mount plate for retractable locating pin units LCP50



■ **GR8SR40D**  
Rear mount plate for size 40 clamps



■ **GR8SR50D**  
Rear mount plate for retractable locating pin units LCP50



■ **GR8SR50M8D**  
Rear mount plate with M8 threads



■ **GR8SS50D**  
Side mount plate for retractable locating pin units LCP50



■ **GR8MF40AD**  
Interlocking adapter



■ **GR8MF40D**  
Front mount plate for size 40 clamps



■ **GR8MF50D**  
Front mount plate for size 50 clamps



■ **GR8MFGLD**  
Front mount plate for UGP40VL



■ **GR8MP12D**  
Proximity mount with 12 mm inner  $\varnothing$



■ **GR8MP18D**  
Proximity mount with 18 mm inner  $\varnothing$



■ **GR8MP19D**  
Vacuum cup adapter with 19 mm inner  $\varnothing$



■ **GR8MP30D**  
Proximity mount with 30 mm inner  $\varnothing$





Mounting adapters

■ **GR8SCB30D**  
Ball mount - 30



■ **GR8SCB45D**  
Ball mount - 45



Mounts for LGP32-40

■ **GR8LGP32MO25**  
Orbital mount - 360° unlimited  
rotation - Ball Ø 25 mm



■ **GR8LGP32MO30**  
Orbital mount - 360° unlimited  
rotation - Ball Ø 30 mm



■ **GR8LGP32MP**  
Middle flange mount



■ **GR8LGP40MO25**  
Orbital mount - 360° unlimited  
rotation - Ball Ø 25 mm



■ **GR8LGP40MO30**  
Orbital mount - 360° unlimited  
rotation - Ball Ø 30 mm



■ **GR8LGP40MO45**  
Orbital mount - 360° unlimited  
rotation - Ball Ø 45 mm



■ **GR8LGP40MP**  
Orbital mount - 360° unlimited  
rotation



**TECHNICAL CHARACTERISTICS**

**Ø 30 mm**

Moment of inertia	$I_x = 2,326 \text{ cm}^4$	$I_y = 2,326 \text{ cm}^4$
Section modulus	$W_x = 1,615 \text{ cm}^3$	$W_y = 1,615 \text{ cm}^3$

**Ø 45 mm**

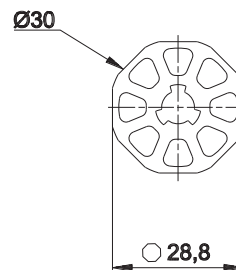
Moment of inertia	$I_x = 10,713 \text{ cm}^4$	$I_y = 10,713 \text{ cm}^4$
Section modulus	$W_x = 4,926 \text{ cm}^3$	$W_y = 4,926 \text{ cm}^3$

**Ø 70 mm**

Moment of inertia	$I_x = 60,861 \text{ cm}^4$	$I_y = 60,861 \text{ cm}^4$
Section modulus	$W_x = 17,9 \text{ cm}^3$	$W_y = 17,9 \text{ cm}^3$

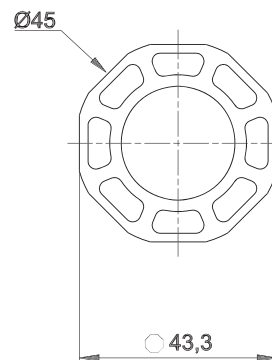
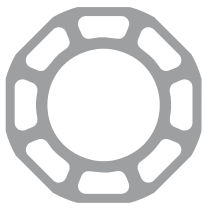


**GR8B30S6000 Ø 30 mm Octagonal boom**



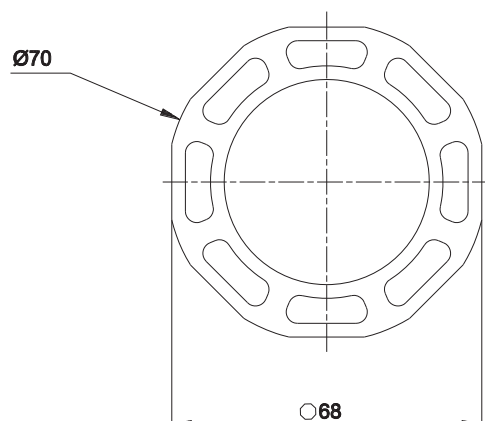
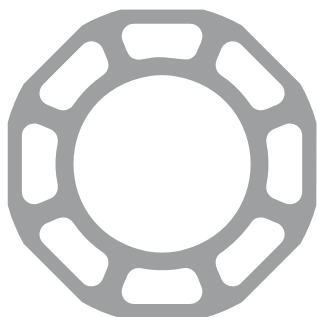
Material:	Aluminium EN AW6063 T6
Weight Ø 30 mm:	1,04 Kg/m

**GR8B456000 Ø 45 mm Octagonal boom**



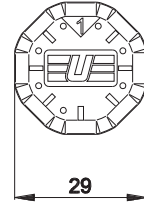
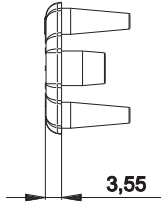
Material:	Aluminium EN AW6063 T6
Weight Ø 45 mm:	1,74 Kg/m

**GR8B706000 Ø 70 mm Octagonal boom**

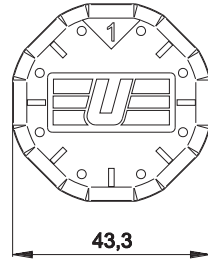
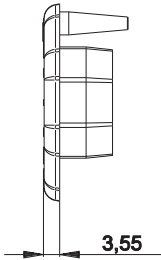


Material:	Aluminium EN AW6063 T6
Weight Ø 70 mm:	3,77 Kg/m

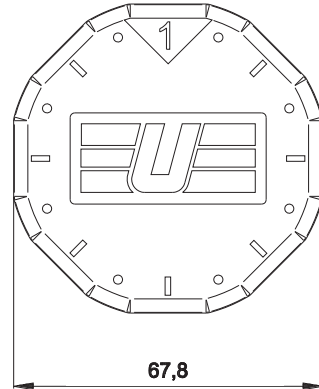
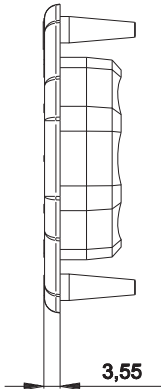
GR8C30 30 mm Octagonal boom end cap



GR8C45 45 mm Octagonal boom end cap



GR8C70 70 mm Octagonal boom end cap





## TECHNICAL CHARACTERISTICS

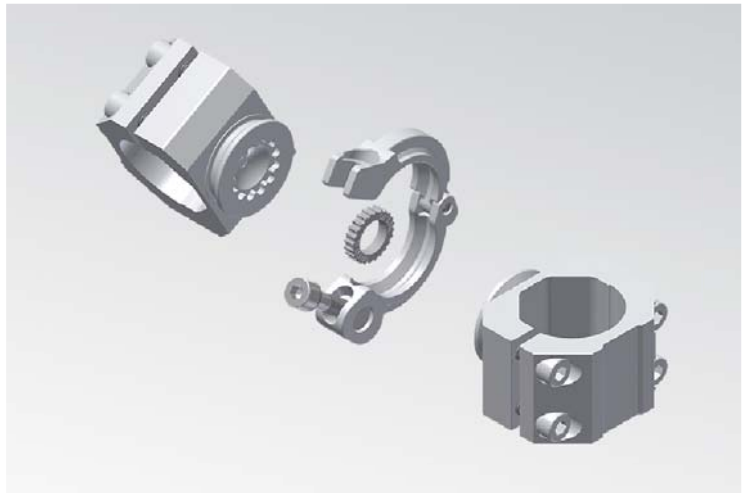
**Easily configurable and ready-to-assemble** modular components.

No welding or doweling or cutting required: each component can be adjusted, removed or repositioned during the set-up phase or in case of a part changeover, easily and quickly.

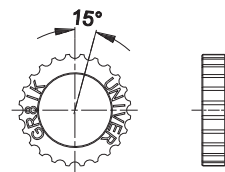
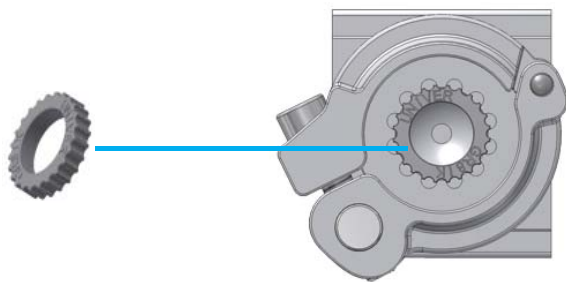
### Compact design

Easily recognisable components: the part number is laser-marked on each mounting element. The Interlocking key insert guarantees a high positional precision in 15° steps.

The locking ring locks the mounting elements altogether and guarantees that the system maintains a **high level of stiffness** during its life.

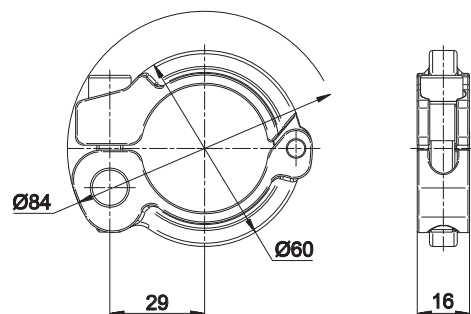


## GR8IK Interlocking key insert



<b>Material:</b>	Steel
<b>Weight:</b>	0,09 kg

## GR8LHD Locking ring



	Tightening torque	Screw
GR8LK	28 Nm	M8 x 40

<b>Material:</b>	Steel
<b>Weight:</b>	0,18 kg

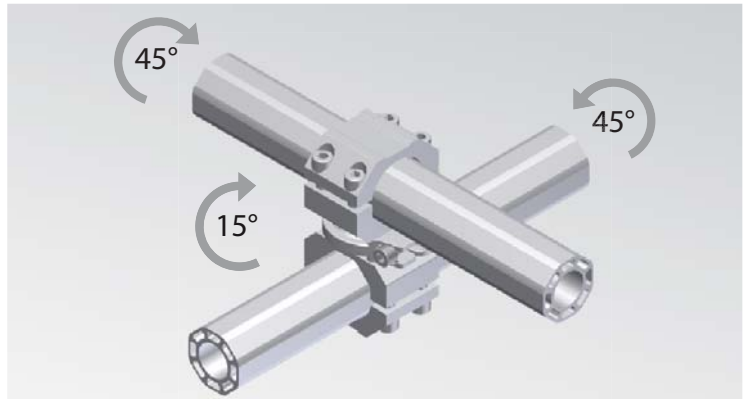
**TECHNICAL CHARACTERISTICS**

The cross joints connect two booms in 15° orientation.  
The possible connections are between:

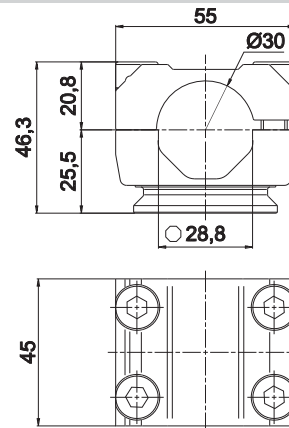
- 30/30 mm booms
- 30/45 mm booms
- 45/45 mm booms
- 70/30 mm booms
- 70/45 mm booms
- 70/70 mm booms

The Intellocking key insert guarantees a high positional precision in 15° steps.

Without the interlocking insert, the orientation is stepless.



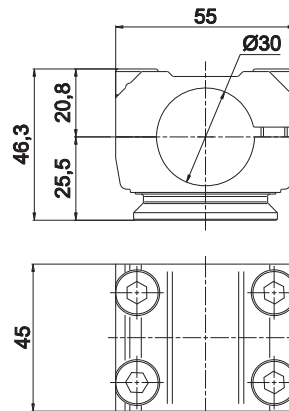
**GR8CJ30D Cross joint 30**



	Tightening torque	Screw
GR8CJ30D	25 Nm	M8 x 25

Material:	Aluminium EN AW 6005 T6
Weight:	0,21 kg
Max static load:	200 Nm

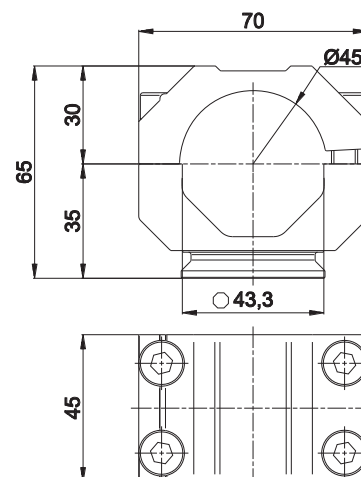
**GR8RJ30D Round Joint 30**



	Tightening torque	Screw
GR8RJ30D	25 Nm	M8 x 25

Material:	Aluminium EN AW 6005 T6
Weight:	0,21 kg
Max static load:	200 Nm

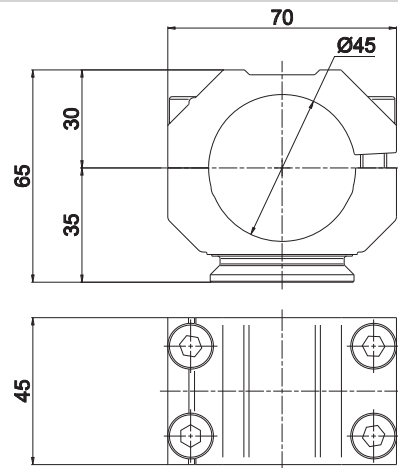
**GR8CJ45D Cross joint 45**



	Tightening torque	Screw
GR8CJ45D	25 Nm	M8 x 25

Material:	Aluminium EN AW 6005 T6
Weight:	0,3 Kg
Max static load:	200 Nm

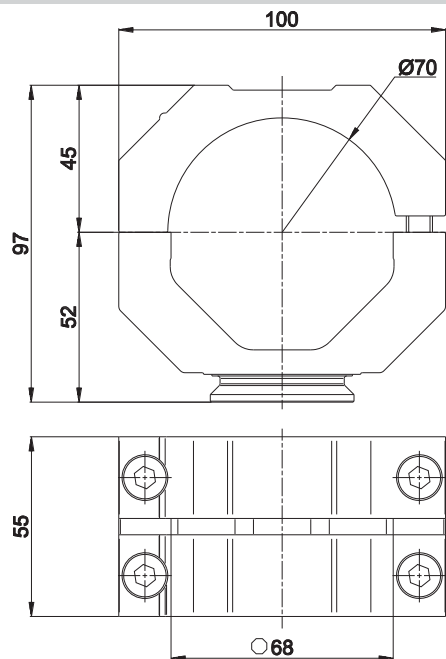
GR8RJ45D Round Joint 45



	Tightening torque	Screw
GR8RJ45D	25 Nm	M8 x 25

Material:	Aluminium EN AW 6005 T6
Weight:	0,3 Kg
Max static load:	200 Nm

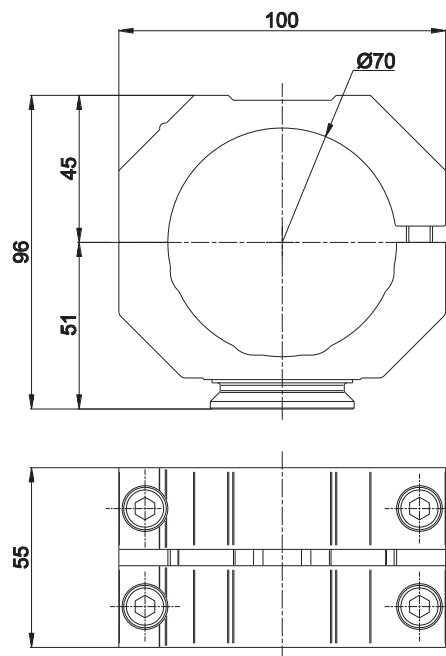
GR8CJ70D Cross joint 70



	Tightening torque	Screw
GR8CJ70D	25 Nm	M8 x 25

Material:	Aluminium EN AW 6005 T6
Weight:	0,60 Kg
Max static load:	200 Nm

GR8RJ70 Round Joint 70



	Tightening torque	Screw
GR8RJ70	25 Nm	M8 x 25

Material:	Aluminium EN AW 6005 T6
Weight:	0,6 Kg
Max static load:	200 Nm

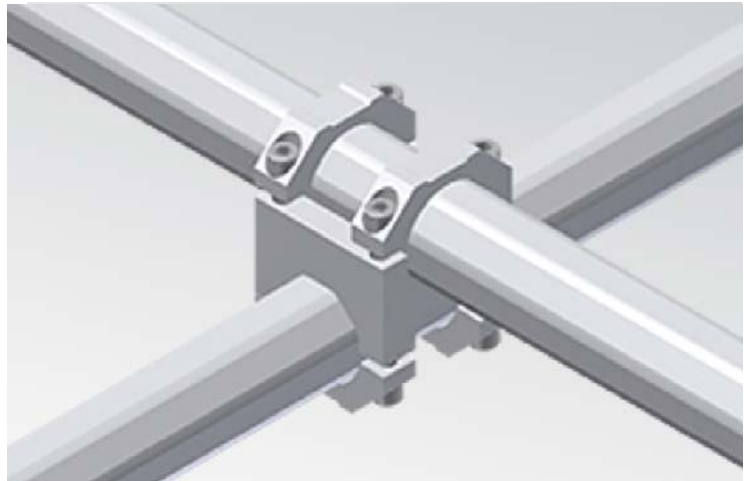


**TECHNICAL CHARACTERISTICS**

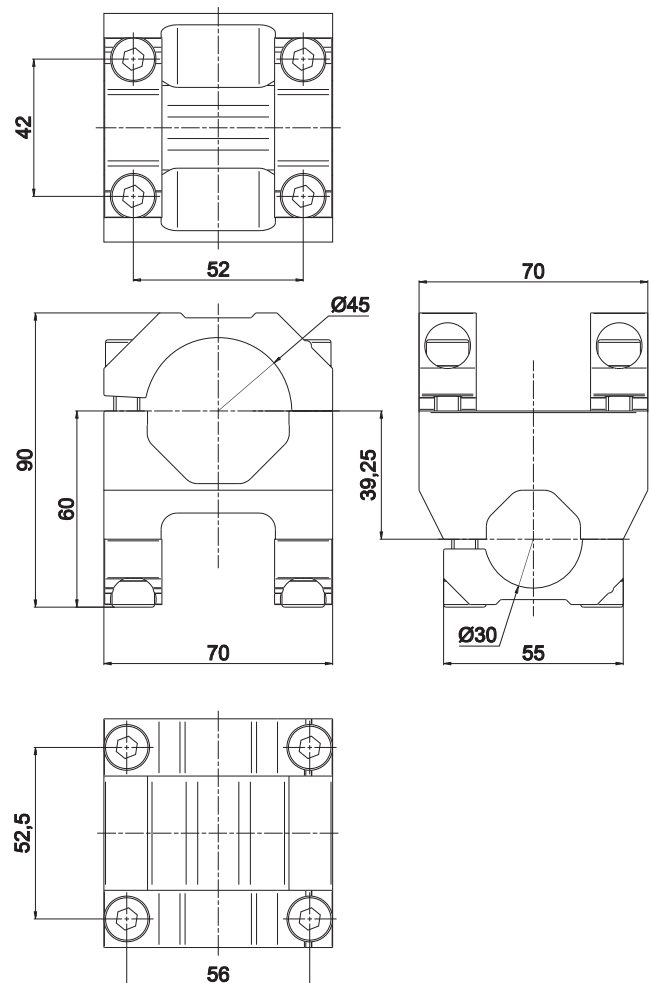
Mounting systems for 90° connections with overlapped bars.

Heavy duty mounts for:

- 45/30 mm booms
- 45/45 mm booms
- 70/45 mm booms
- 70/70 mm booms



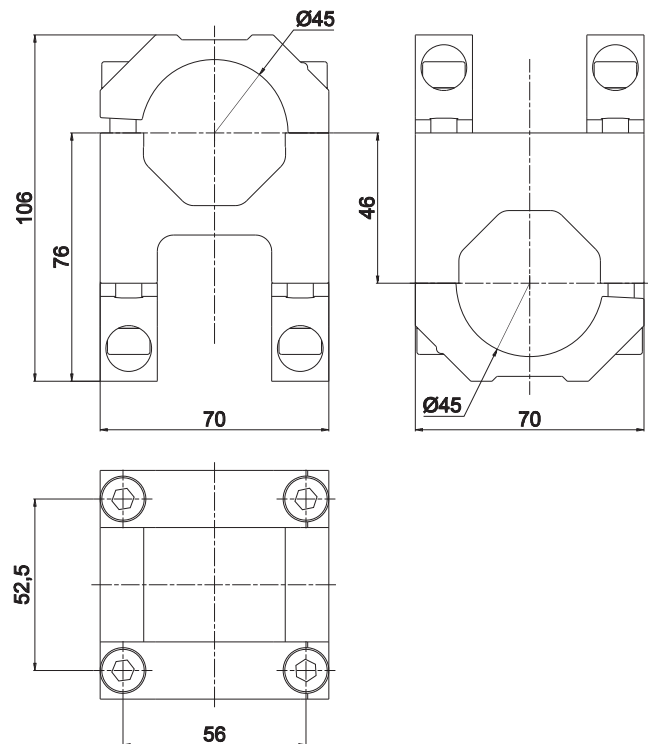
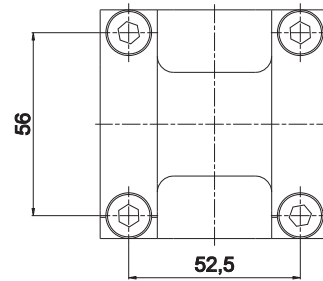
**GR8HD4530V Joint 45-30**



	Tightening torque	Screw
GR8HD4530V	25 Nm	M8 x 25

**Material:** Aluminium EN AW 6005 T6  
**Weight:** 0,5 kg  
**Max static load:** 200 Nm

## GR8HD4545V Joint 45-45



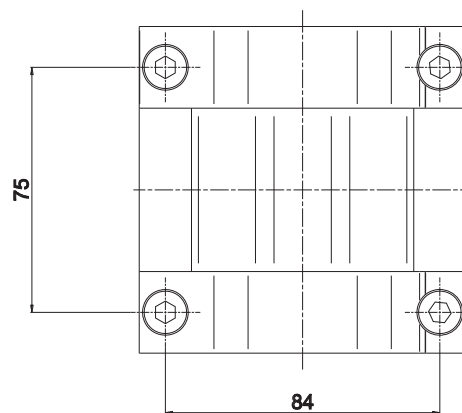
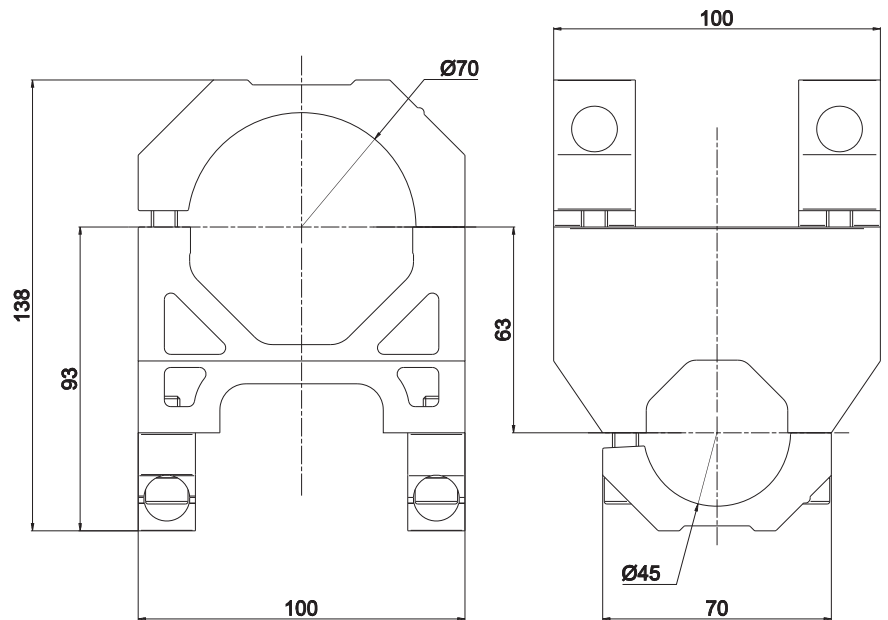
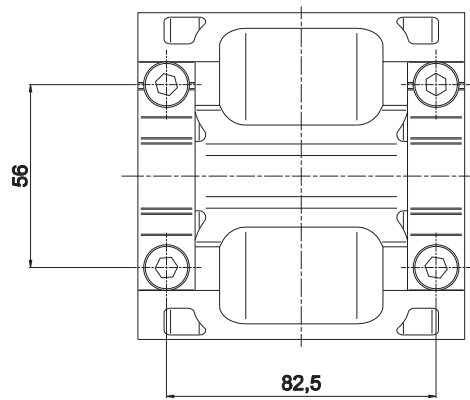
	Tightening torque	Screw
GR8HD4545V	25 Nm	M8 x 25

Material: Aluminium EN AW 6005 T6

Weight: 0,54 kg

Max static load: 480 Nm

GR8HD7045 Joint 45-70



	Tightening torque	Screw
GR8HD7045	25 Nm	M8x25

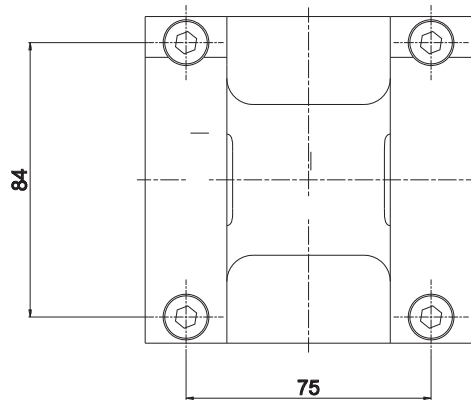
Material: Aluminium EN AW 6005 T6

Weight: 1 kg

Max static load: 480 Nm

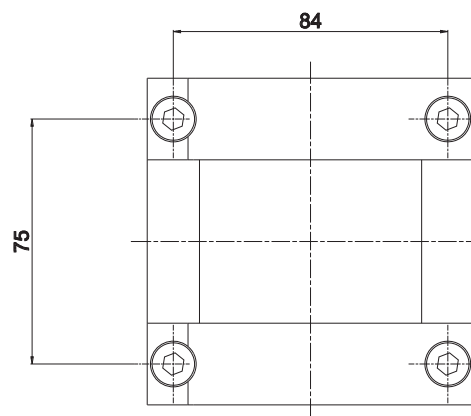
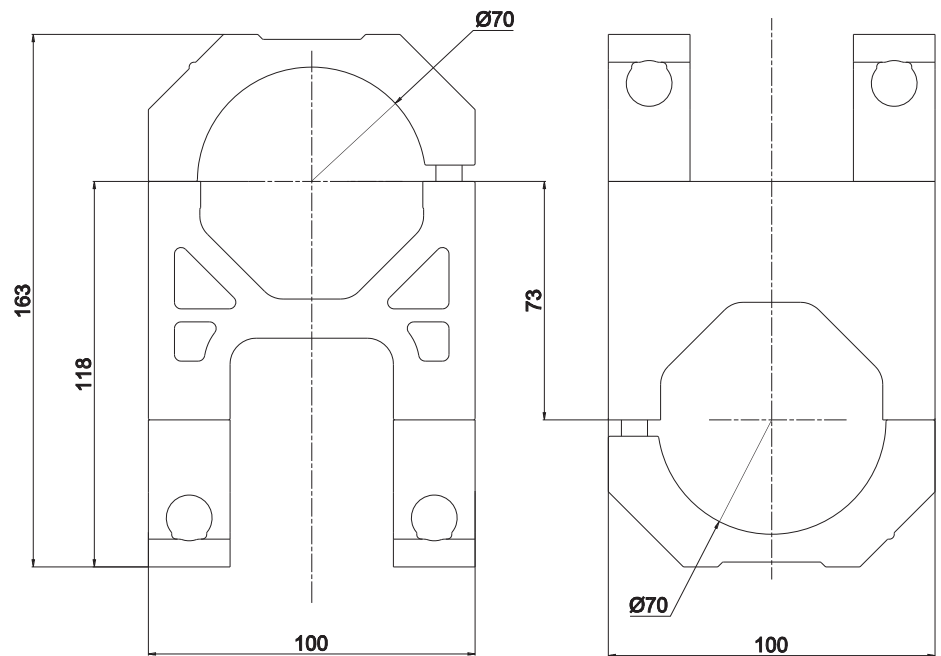


GR8HD7070 Joint 70-70



	Tightening torque	Screw
GR8HD7070	25 Nm	M8x25

Material: Aluminium EN AW 6005 T6  
 Weight: 1,2 kg  
 Max static load: 800 Nm

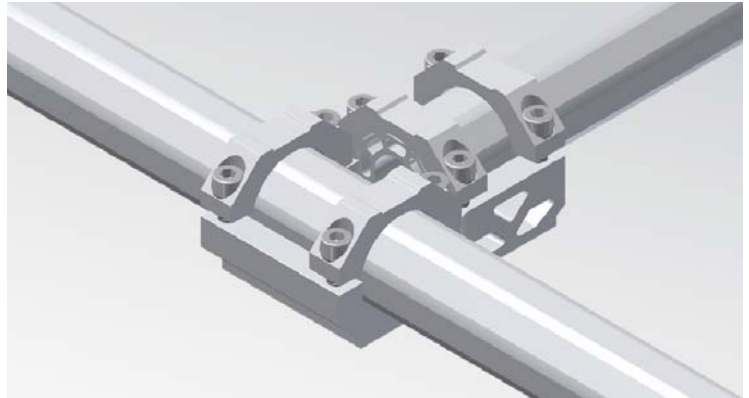


**TECHNICAL CHARACTERISTICS**

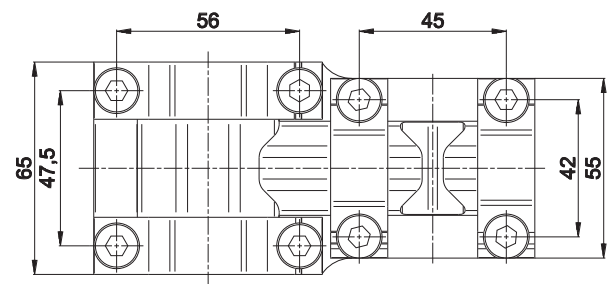
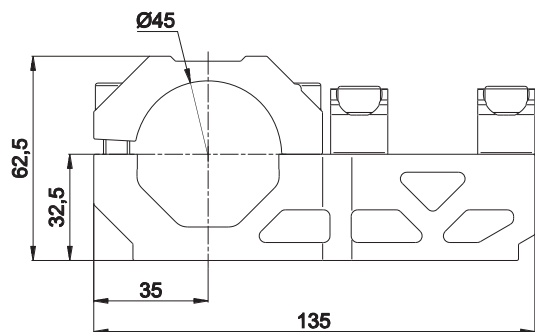
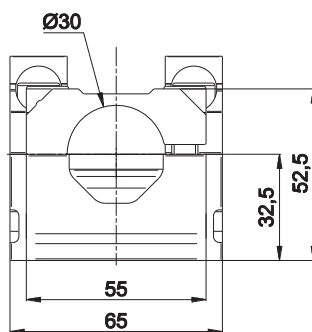
Mounting system for 90° connection with coplanar bars.

Coplanar mounts for

- booms Ø 45-30
- booms Ø 45-45
- booms Ø 70-45
- booms Ø 70-70



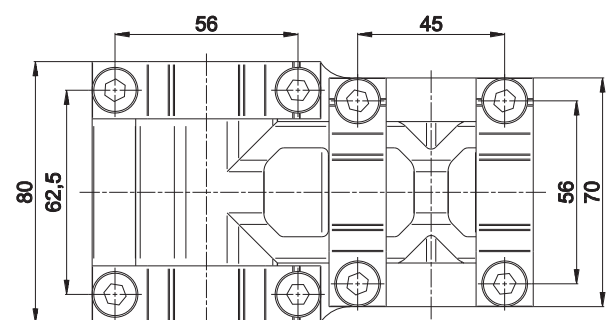
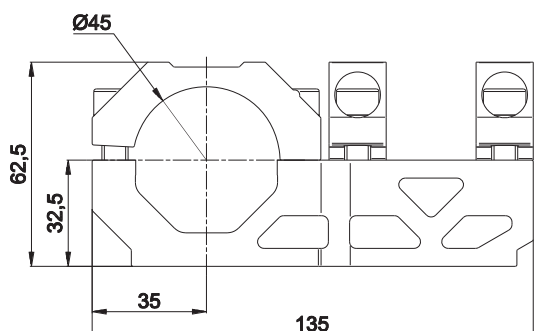
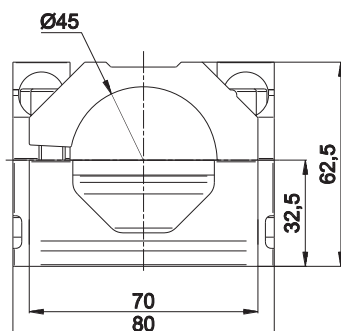
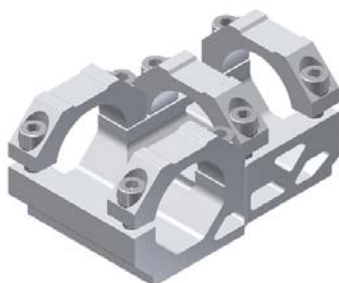
**GR8CM4530 Coplanar Mount 45-30**



	Tightening torque	Screw
GR8CM4530	25 Nm	M8x25

Material: Aluminium EN AW 6005 T6  
 Weight: 0,6 kg  
 Max static load: 280 Nm

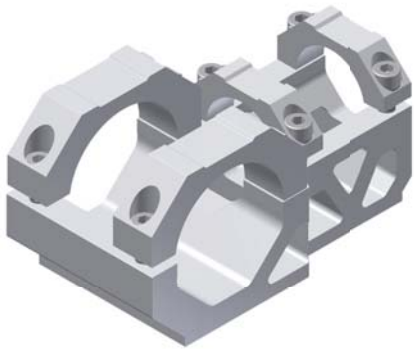
**GR8CM4545 Coplanar Mount 45-45**



	Tightening torque	Screw
GR8CM4545	25 Nm	M8x25

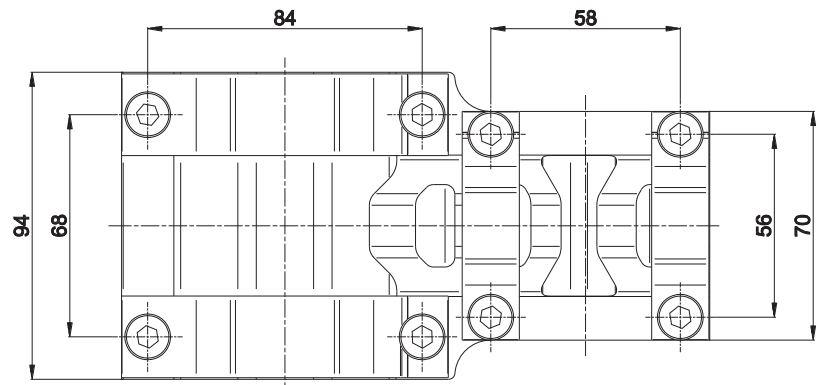
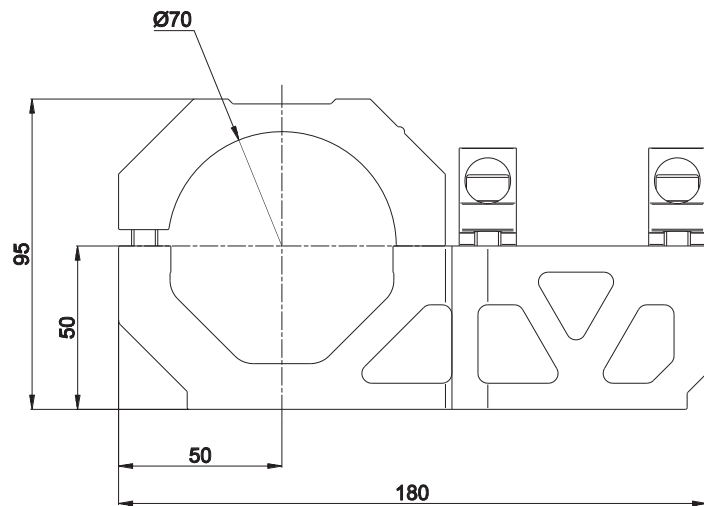
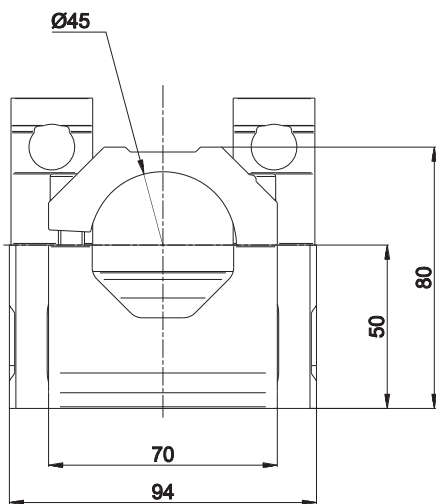
Material: Aluminium EN AW 6005 T6  
 Weight: 0,68 Kg  
 Max static load: 470 Nm

GR8CM7045 Coplanar Mount 45-70



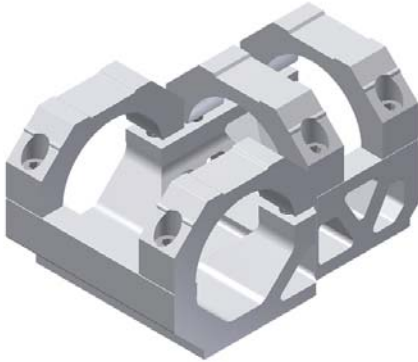
	Tightening torque	Screw
GR8CM7045	25 Nm	M8 x 25

Material:	Aluminium EN AW 6005 T6
Weight:	1,36 Kg
Max static load:	470 Nm



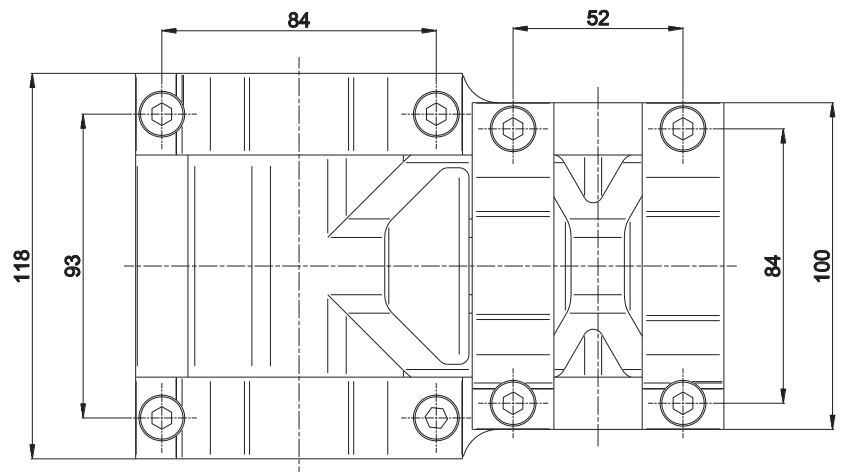
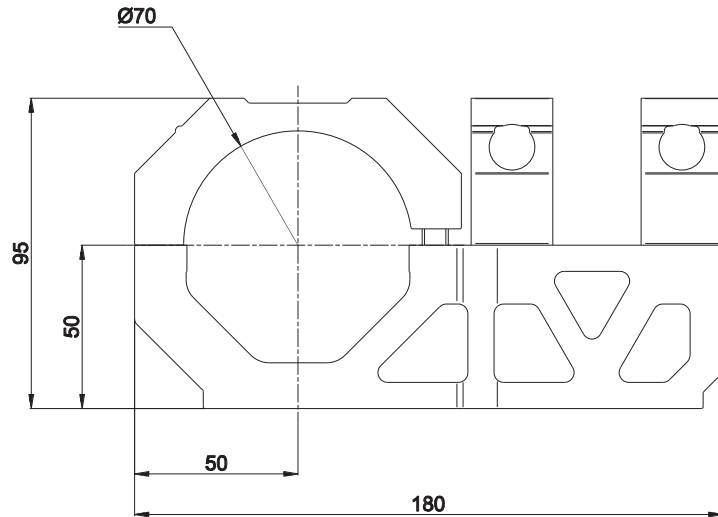
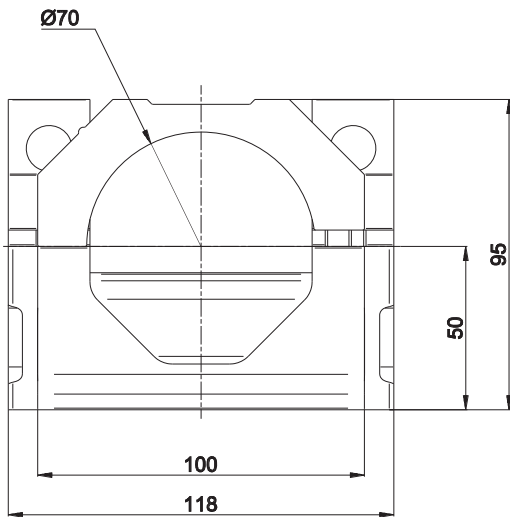


GR8CM7070 Coplanar Mount 70 -70



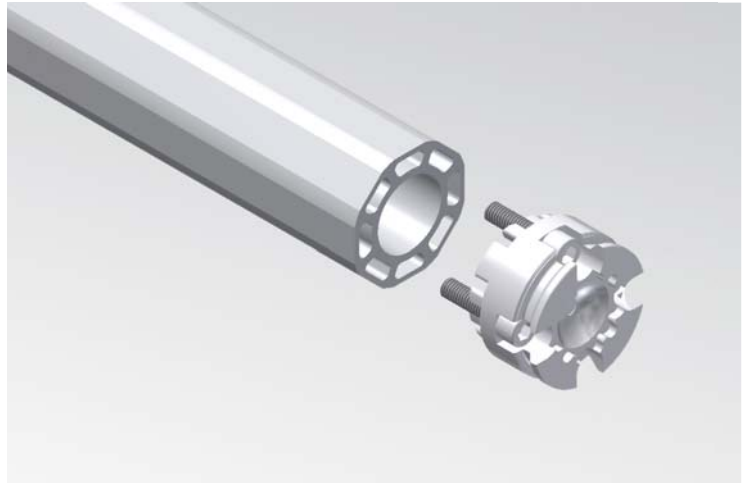
	Tightening torque	Screw
GR8CM7070	25 Nm	M8x25

Material: Aluminium EN AW 6005 T6  
 Weight: 1,65 Kg  
 Max static load: 750 Nm

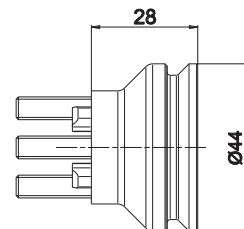


**TECHNICAL FEATURES**

This end adapter offers a **low profile solution** to connect 30 and 45 mm booms and grants a **15° orientation**.  
 No welding or doweling or cutting required: each component can be adjusted, removed or repositioned during the set-up phase or in case of a part changeover - easily and quickly.  
 The Intelocking key insert guarantees a high positional precision in 15° steps. Without the interlocking insert, the orientation is stepless.



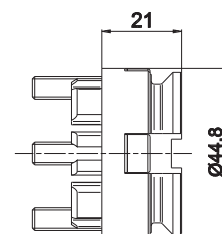
**GR8SCI30D Interlocking adapter 30**



	Tightening torque	Screw
GR8SCI30D	10 Nm	M6x35

**Material:** Aluminium EN AW 2011 T6  
**Weight:** 0,07 kg  
**Max static load:** 200 Nm

**GR8ECI45D Interlocking adapter 30**



	Tightening torque	Screw
GR8ECI45D	10 Nm	M6x25

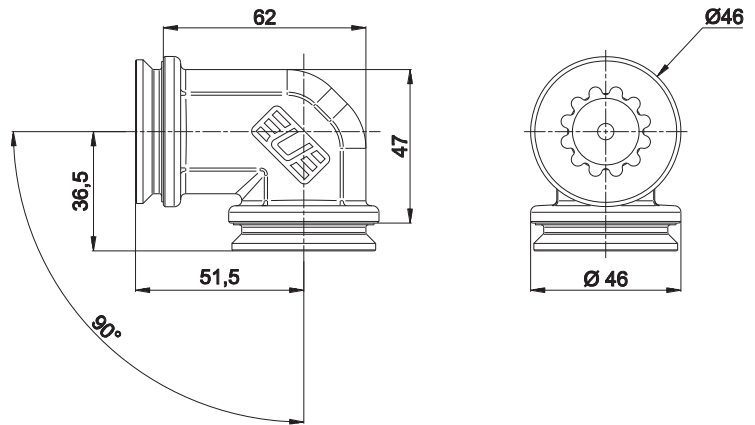
**Material:** Aluminium EN AW 2011 T6  
**Weight:** 0,07 kg  
**Max static load:** 200 Nm

**TECHNICAL FEATURES**

This innovative and ready-to-assemble mounting allows a 15° orientation of the booms **along their two axis**. It is a universal mount which can be used with 30 as well as with 45 mm booms thus allowing a reduction of stock requirements. The Interlocking key secures a precise positioning.

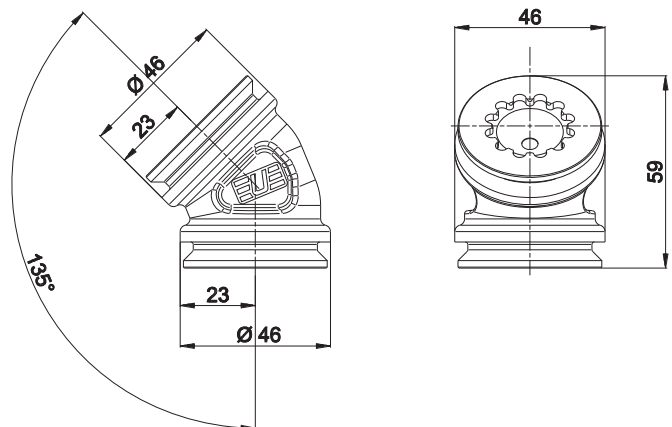


**GR8EOAD Orientable angle adapter**



<b>Material:</b>	Aluminium UNI3054-GALSI 4,5 Mn Mg T6
<b>Weight:</b>	0,25 kg
<b>Max static load:</b>	200 Nm

**GR8EOAD45 Orientable angle adapter**



<b>Material:</b>	Aluminium UNI3054-GALSI 4,5 Mn Mg T6
<b>Weight:</b>	0,15 kg
<b>Max static load:</b>	200 Nm

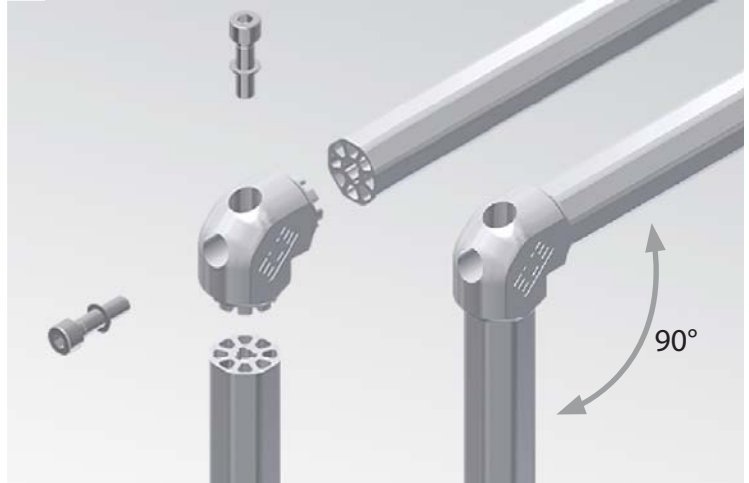
**TECHNICAL CHARACTERISTICS**

**Edge mounting block for a 90° end transition.**

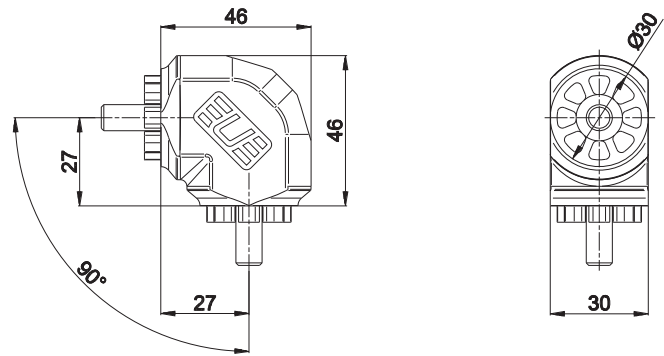
No welding or doweling or cutting required.

**Compact design**

Easily recognisable components: the part number is laser-marked on each mounting element



**GR8SM3030 Edge mounting element 30-30**



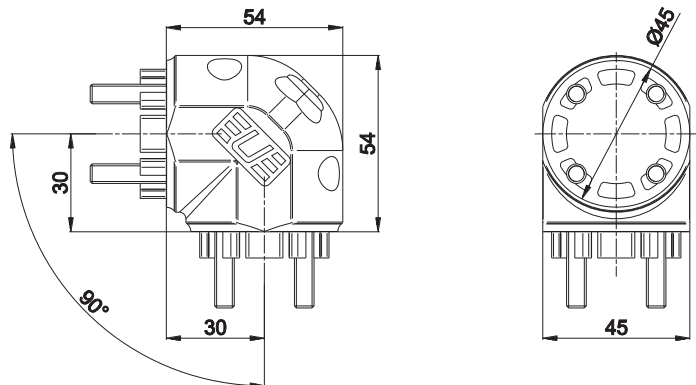
	Tightening torque	Screw
GR8SM3030	25 Nm	M8x30

**Material:** Aluminium UNI3054-GALSI 4,5 Mn Mg T6

**Weight:** 0,15 kg

**Max static load:** 200 Nm

**GR8SM4545 Edge mounting element 45-45**



	Tightening torque	Screw
GR8SM4545	25 Nm	M6x30

**Material:** Aluminium UNI3054-GALSI 4,5 Mn Mg T6

**Weight:** 0,25 kg

**Max static load:** 200 Nm



**TECHNICAL CHARACTERISTICS**
**Edge mounting block for a 90° end transition.**

No welding or doweling or cutting required.

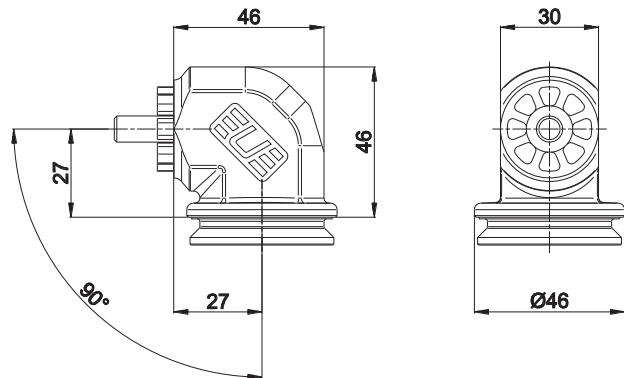
**Compact design**

Easily recognisable components: the part number is laser-marked on each mounting element

 This innovative and ready-to-assemble mounting allows a 15° orientation of the booms **along their two axis.**

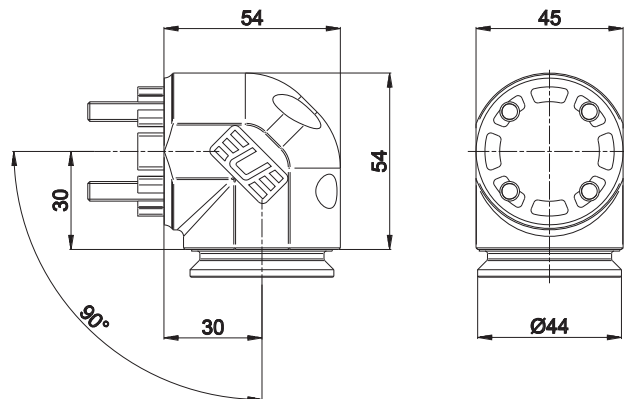
It is a universal mount which can be used with 30 as well as with 45 mm booms thus allowing a reduction of stock requirements.

The Interlocking key secures a precise positioning.


**GR8A30 Edge mount with an orientable side for 30 mm booms**


	Tightening torque	Screw
GR8A30	25 Nm	M8x30

**Material:** Aluminium UNI3054-GALSI 4,5 Mn Mg T6  
**Weight:** 0,17 kg  
**Max static load:** 200 Nm

**GR8A45 Edge mount with an orientable side for 45 mm booms**


	Tightening torque	Screw
GR8A45	25 Nm	M6x30

**Material:** Aluminium UNI3054-GALSI 4,5 Mn Mg T6  
**Weight:** 0,34 kg  
**Max static load:** 200 Nm

**TECHNICAL CHARACTERISTICS**

**Edge mounting block for a 135° end transition.**

No welding or doweling or cutting required.

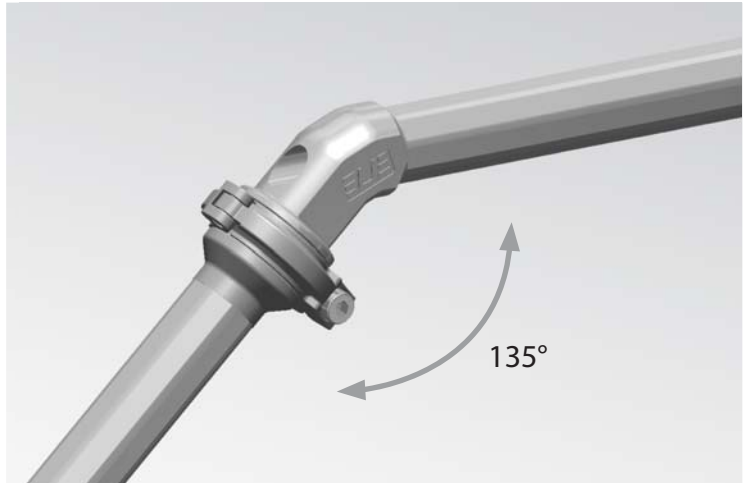
**Compact design**

Easily recognisable components: the part number is laser-marked on each mounting element

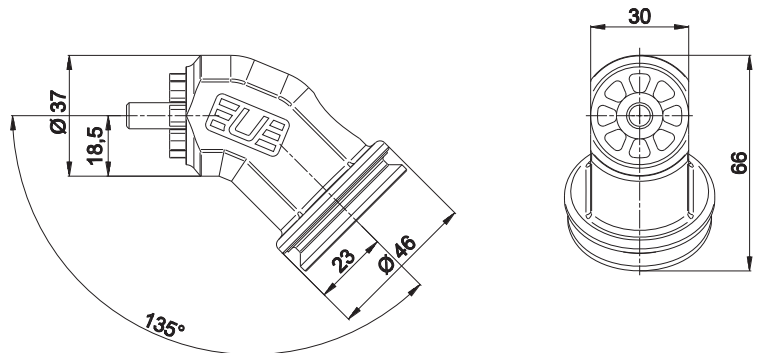
This innovative and ready- to- assemble mounting allows a 15° orientation of the booms **along their two axis.**

It is a universal mount which can be used with 30 as well as with 45 mm booms thus allowing a reduction of stock requirements.

The Interlocking key secures a precise positioning.



**GR8A3045 45° Mounting element for 30 mm booms**



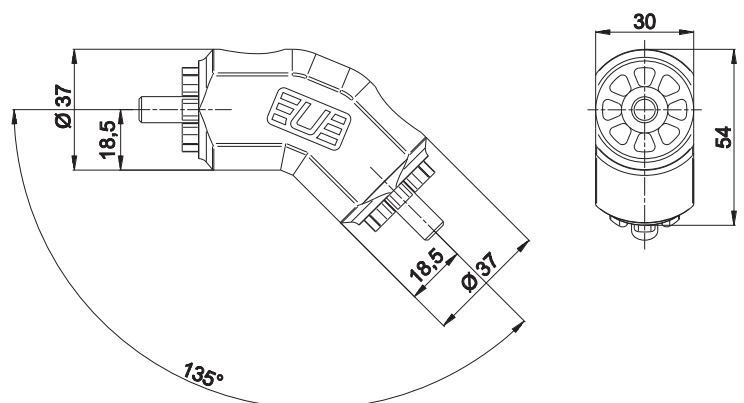
	Tightening torque	Screw
GR8A3045	25 Nm	M8x30

**Material:** Aluminium UNI3054-GALSI 4,5 Mn Mg T6

**Weight:** 0,19 kg

**Max static load:** 200 Nm

**GR8SM3045 45° Mounting element male-female for 30 mm booms**



	Tightening torque	Screw
GR8SM3045	25 Nm	M8x30

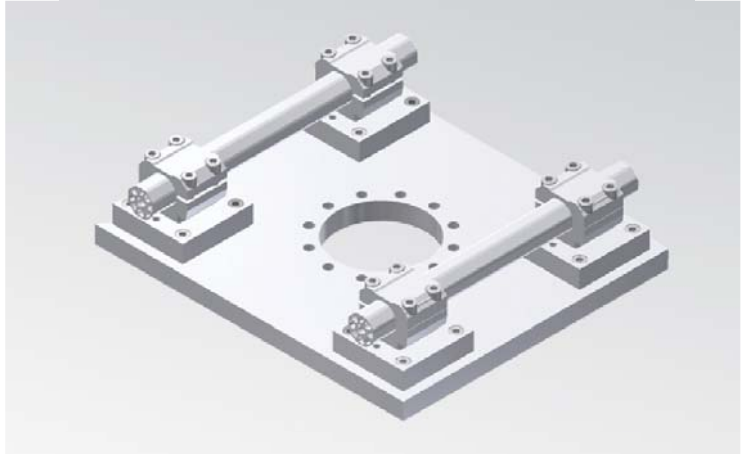
**Material:** Aluminium UNI3054-GALSI 4,5 Mn Mg T6

**Weight:** 0,17 kg

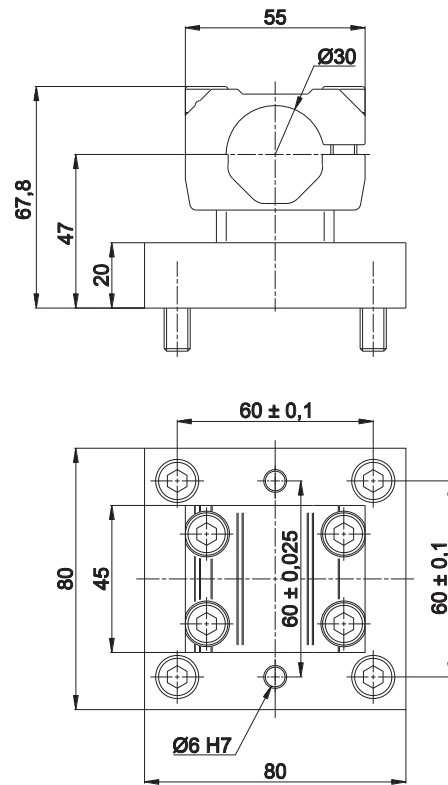
**Max static load:** 200 Nm

**TECHNICAL CHARACTERISTICS**

Efficient base plates for a **precise and rigid positioning** on the tooling table.  
No welding required.



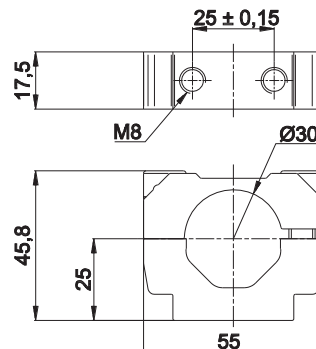
**GR8BB30D Base plate bracket 30**



	Tightening torque	Screw
GR8BB30D	25 Nm	M8 x 20 and M8 x 25

**Material:** Aluminium EN AW 6005 T6  
**Weight:** 0,67 kg

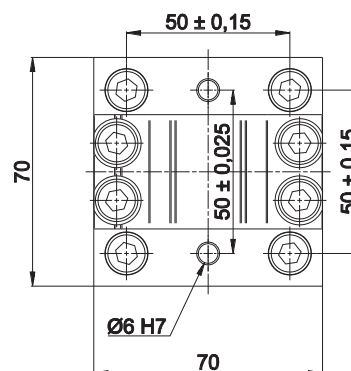
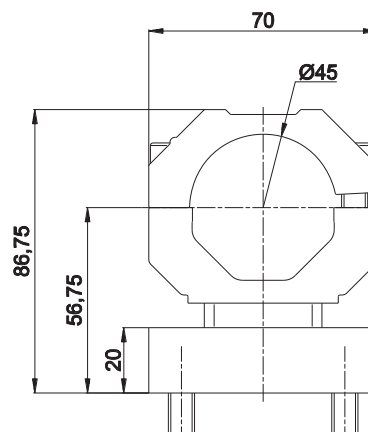
**GR8BC30 Base connector 30**



	Tightening torque	Screw
GR8BC30	25 Nm	M8 x 25

**Material:** Aluminium EN AW 6005 T6  
**Weight:** 0,09 kg

## GR8BB45D Base plate bracket 45

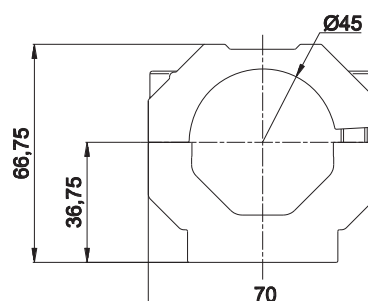
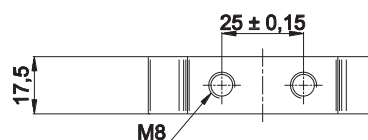


	Tightening torque	Screw
GR8BB45D	25 Nm	M8 x 20 and M8 x 25

Material: Aluminium EN AW 6005 T6

Weight: 0,42 Kg

## GR8BC45 Base connector 45



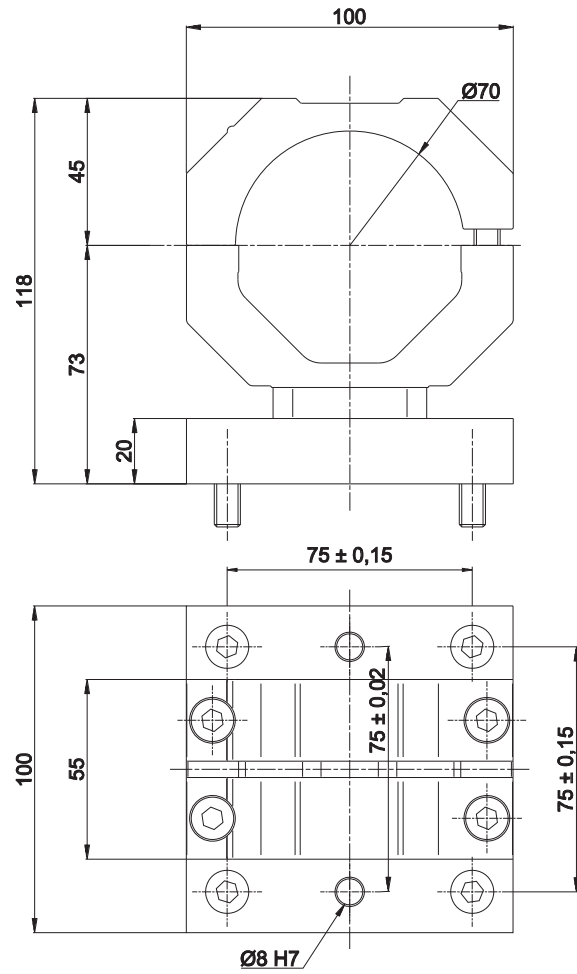
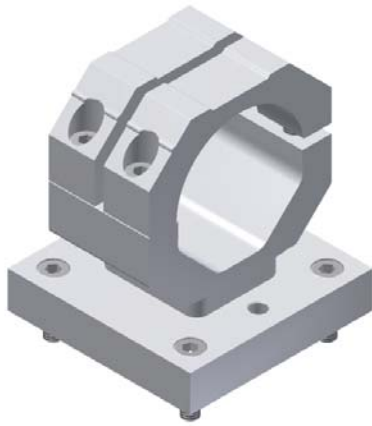
	Tightening torque	Screw
GR8BC45	25 Nm	M8 x 25

Material: Aluminium EN AW 6005 T6

Weight: 0,11 kg



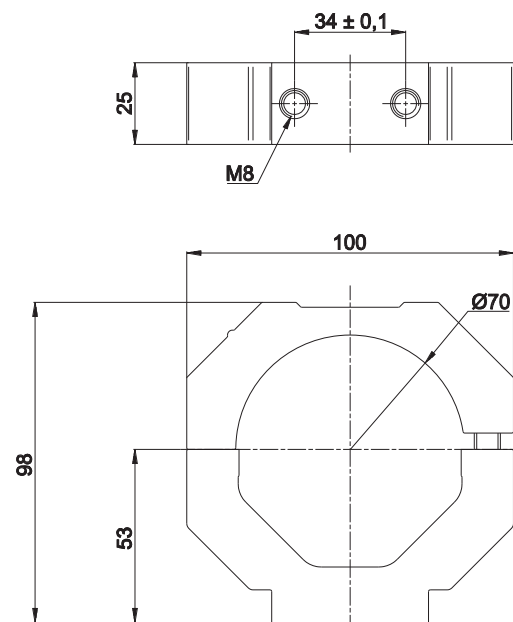
GR8BB70 Base plate bracket 70



	Tightening torque	Screw
GR8BB70	25 Nm	M8 x 25

Material: Aluminium EN AW 6005 T6  
 Weight: 1,21 kg

GR8BC70 Base plate bracket 70



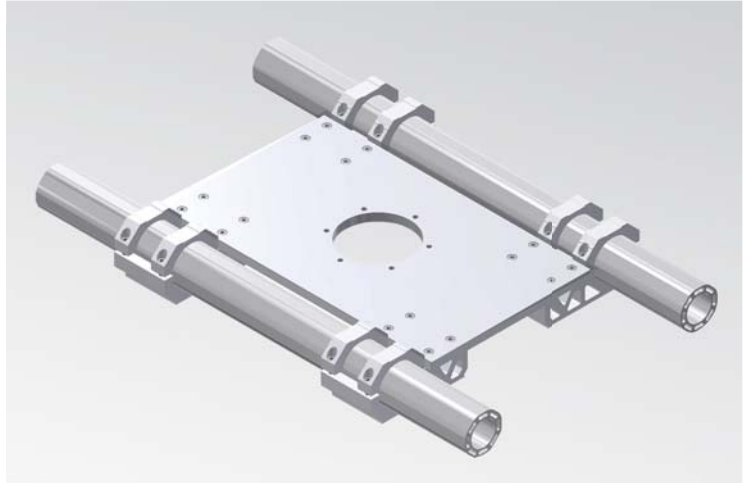
	Tightening torque	Screw
GR8BC70	25 Nm	M8 x 25

Material: Aluminium EN AW 6005 T6  
 Weight: 0,3 kg

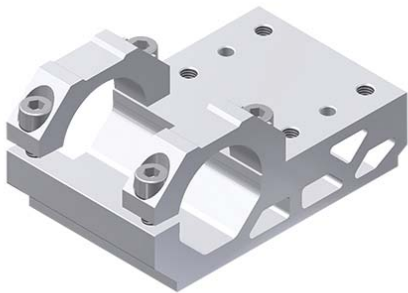
**TECHNICAL CHARACTERISTICS**

Efficient base plates for a **precise and rigid positioning** on the tooling table.

No welding required.

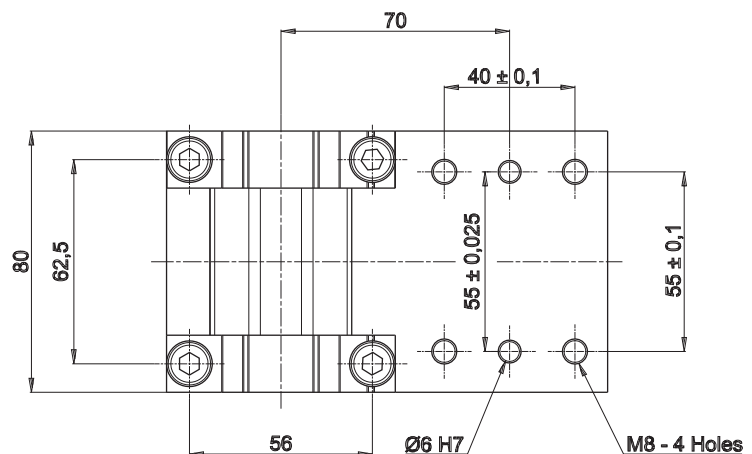
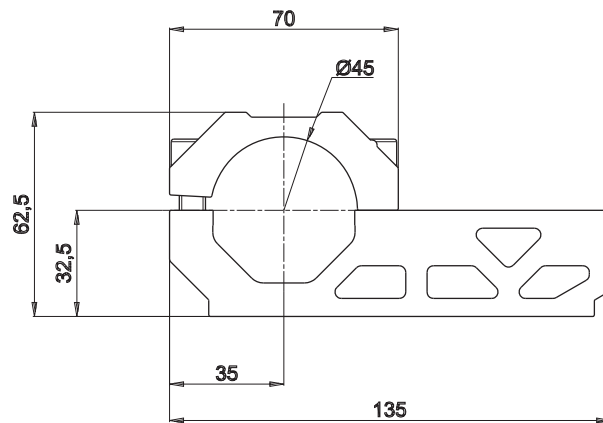
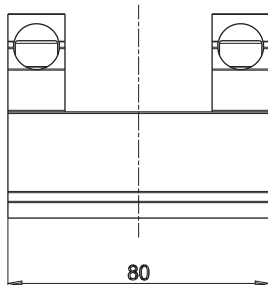


**GR8BL45 Base linear plate 45**

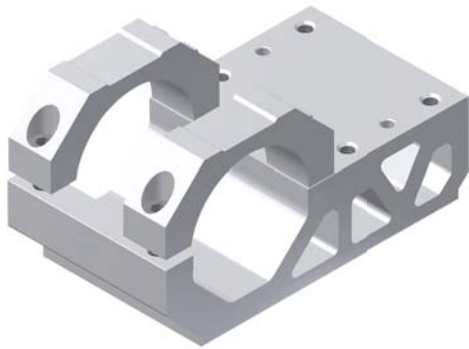


	Tightening torque	Screw
GR8BL45	25 Nm	M8x30

**Material:** Aluminium EN AW 6005 T6  
**Weight:** 0,56 kg



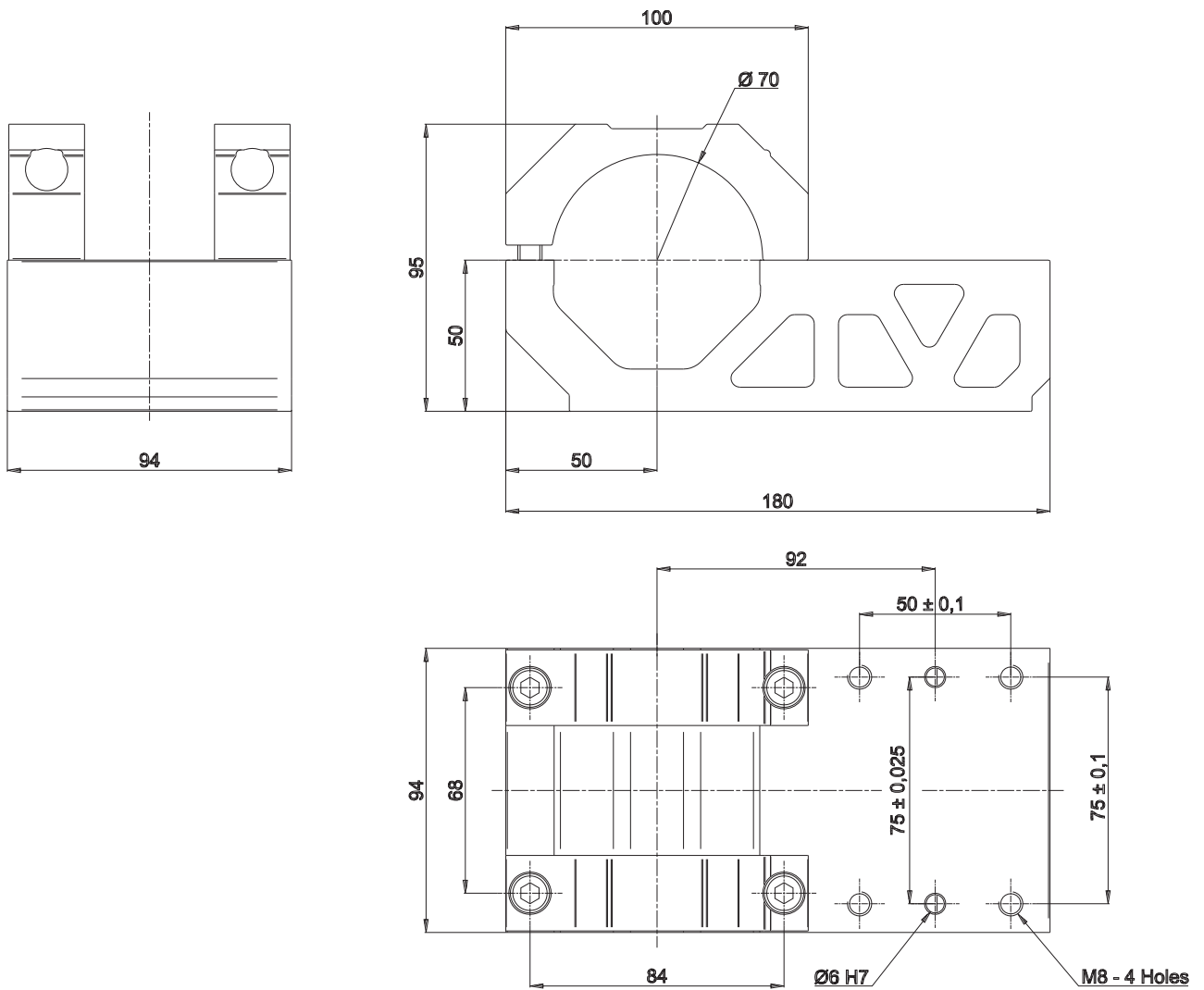
GR8BL70 Base linear plate 70



	Tightening torque	Screw
GR8BL70	25 Nm	M8x30

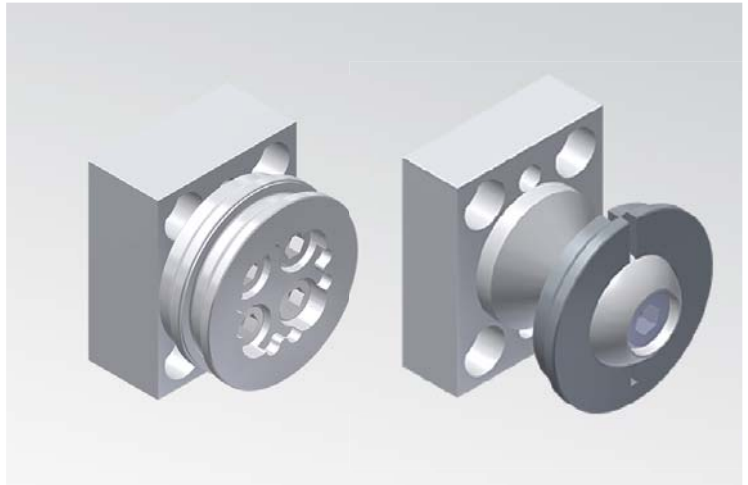
Material: Aluminium EN AW 6005 T6

Weight: 1,5 kg

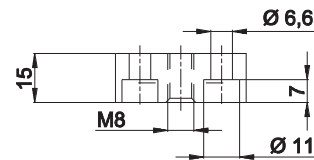
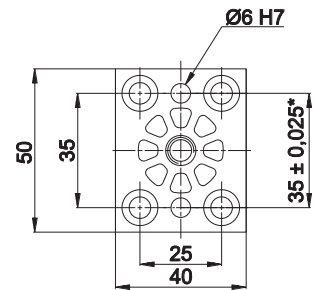


**TECHNICAL FEATURES**

Mounting adapters for pneumatic clamps - size 40 , 50 and 63 mm and for retractable locating pin units.  
Mounting plates with M8 threads available too.  
Easily recognisable components: the part number is laser-marked on each mounting element



**GR8SR40** Rear mount plate for size 40 clamps

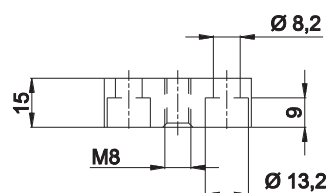
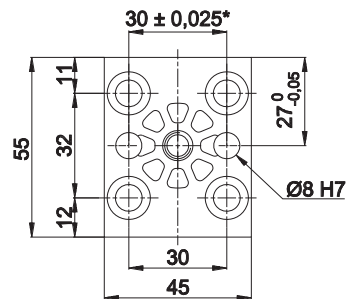


	Tightening torque	Screw
GR8SR40	25 Nm	M8

**Material:** Aluminium EN AW 6005  
**Weight:** 0,065 kg

\* Dowel hole interaxes

**GR8SR50** Rear mount plate for retractable locating pin units LCP50

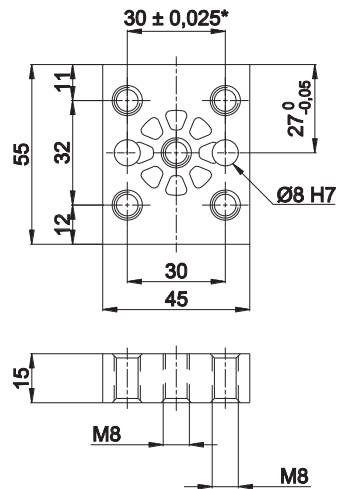


	Tightening torque	Screw
GR8SR50	25 Nm	M8

**Material:** Aluminium EN AW 6005  
**Weight:** 0,075 kg

\* Dowel hole interaxes

**GR8SR50M8** Rear mount plate with M8 threads

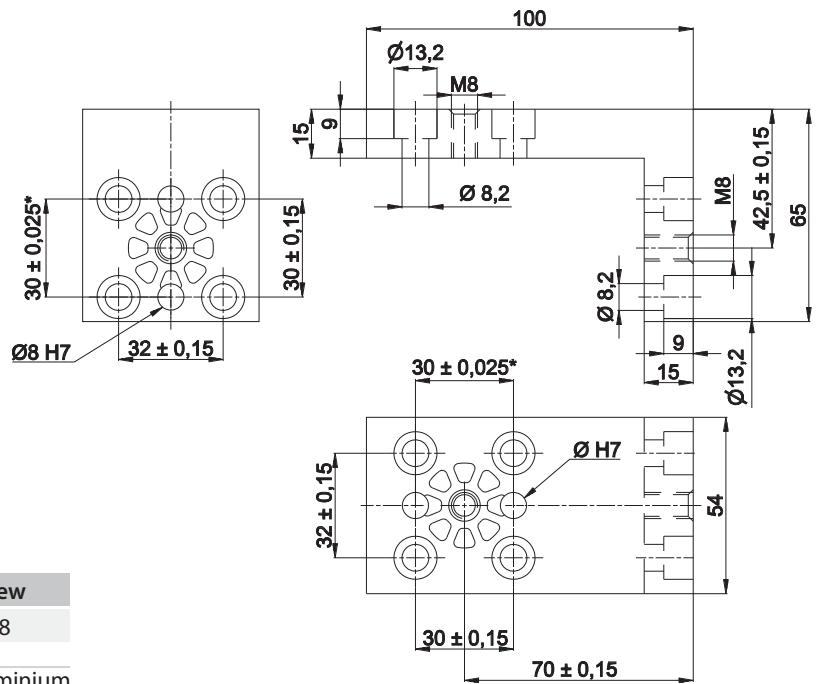
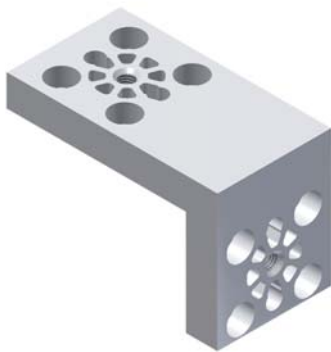


\* Dowel hole interaxes

	Tightening torque	Screw
GR8SR50M8	25 Nm	M8 x 25

Material: Aluminium  
Weight: 0,055 kg

**GR8SS50** Side mount plate for retractable locating pin units LCP50

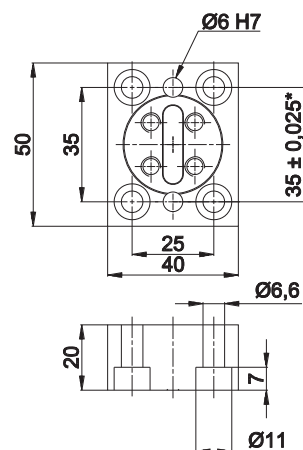
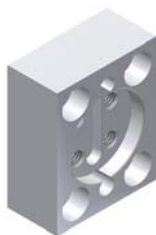


\* Dowel hole interaxes

	Tightening torque	Screw
GR8SS50	25 Nm	M8

Material: Aluminium  
Weight: 0,28 kg

**GR8SR40D** Rear mount plate for size 40 clamps



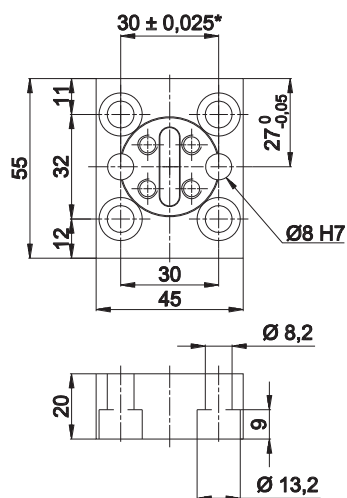
\* Dowel hole interaxes

	Tightening torque	Screw
GR8SR40D	25 Nm	M8

Material: Aluminium  
Weight: 0,28 kg



**GR8SR50D** Rear mount plate for retractable locating pin units LCP50

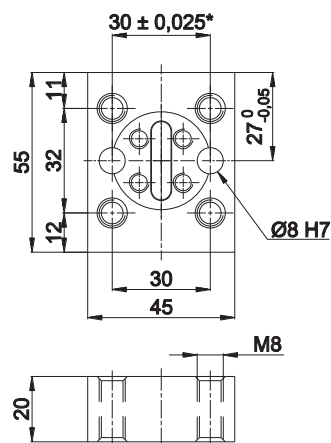


	Tightening torque	Screw
GR8SR50D	25 Nm	M8

Material: Aluminium  
 Weight: 0,28 kg

\* Dowel hole interaxes

**GR8SR50M8D** Rear mount plate with M8 threads

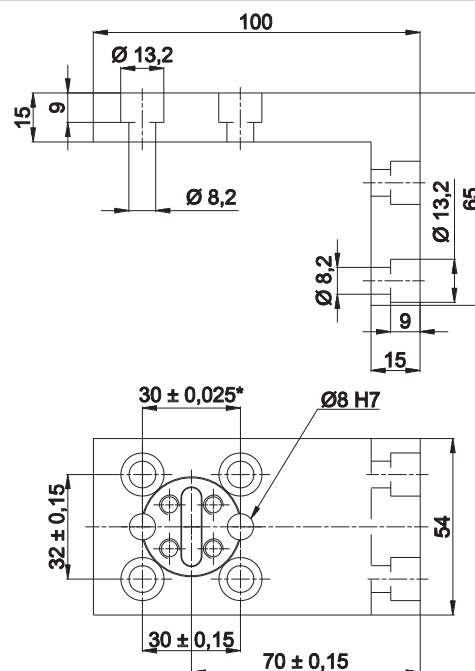
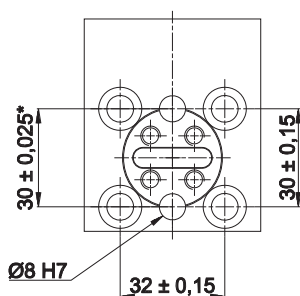


	Tightening torque	Screw
GR8SR50M8D	25 Nm	M8

Material: Aluminium  
 Weight: 0,107 Kg

\* Dowel hole interaxes

**GR8SS50D** Side mount plate for retractable locating pin units LCP50

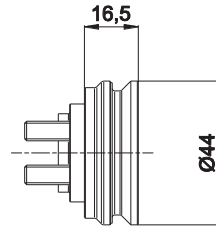


	Tightening torque	Screw
GR8SS50D	25 Nm	M8

Material: Aluminium  
 Weight: 0,26 kg

\* Dowel hole interaxes

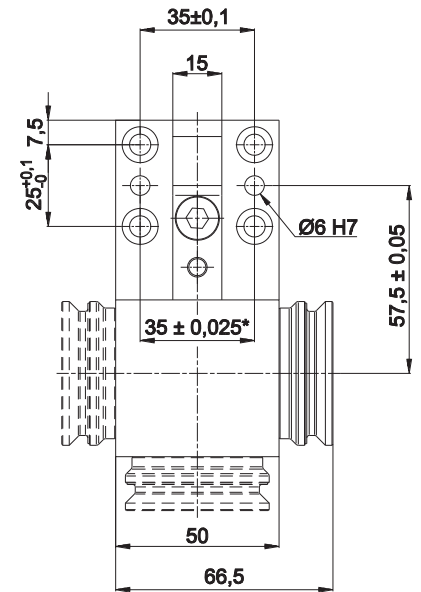
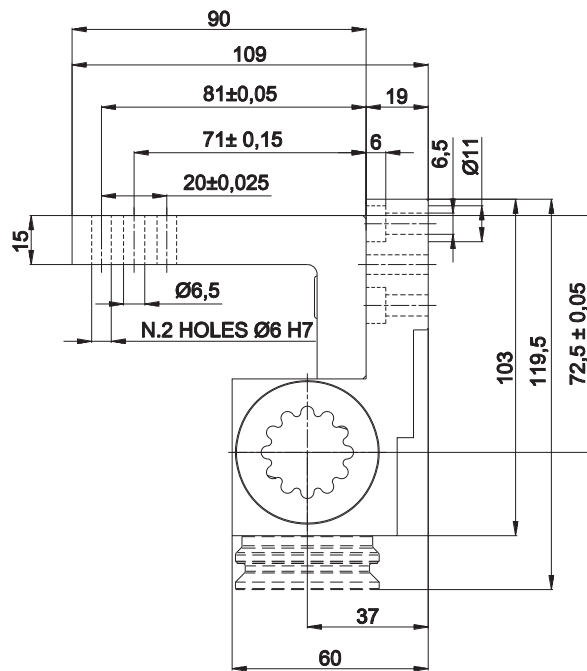
GR8MF40AD Interlocking adapter



	Tightening torque	Screw
GR8MF40AD	25 Nm	M6x25

Material:	Aluminium
Weight:	0,079 Kg
Max static load:	200 Nm

GR8MF40D Front mount plate for size 40 pneumatic clamps

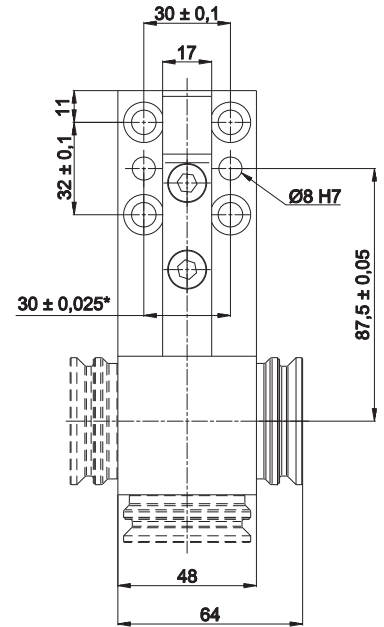
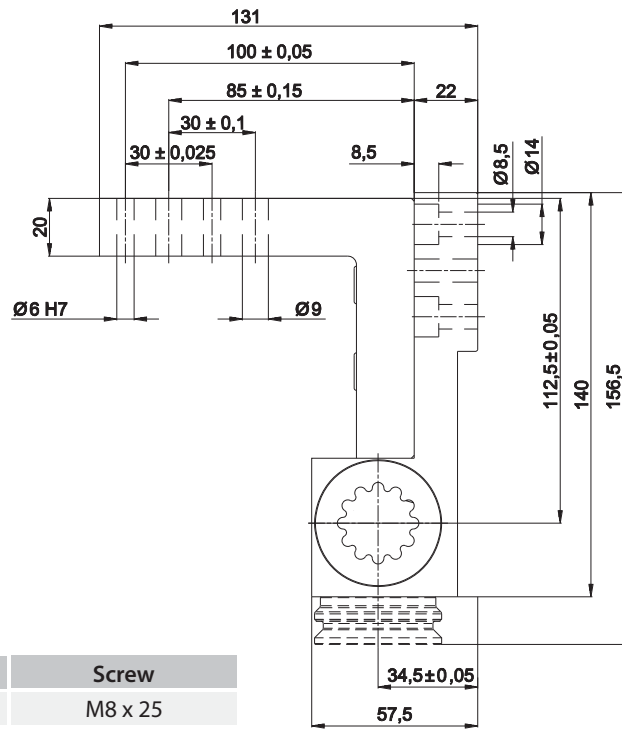


\* Dowel hole interaxes

	Tightening torque	Screw
GR8MF40D	25 Nm	M8 x 18 and M8 x 25

Material:	Aluminium EN AW 2011 T6
Weight:	0,42 Kg
Max static load:	200 Nm

GR8MF50D Front mount plate for size 50 pneumatic clamps

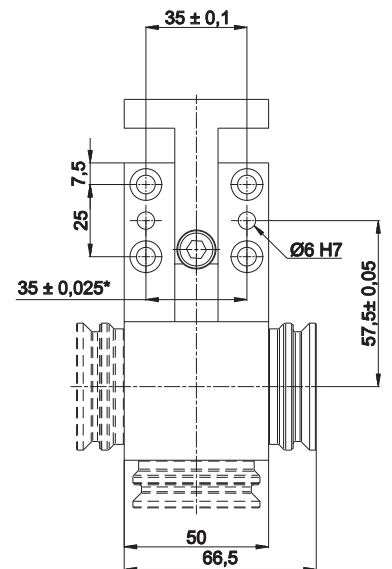
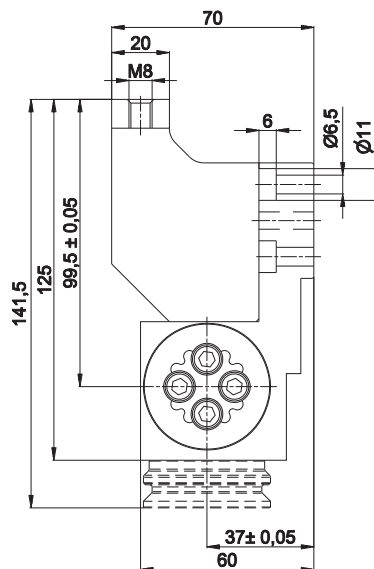


	Tightening torque	Screw
GR8MF50D	25 Nm	M8 x 25

Material: Aluminium EN AW 2011 T6  
 Weight: 0,096 Kg  
 Max static load: 200 Nm

\* Dowel hole interaxes

GR8MFGLD Front mount plate for pneumatic gripper clamps - UGP40VL

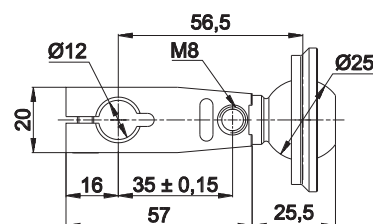
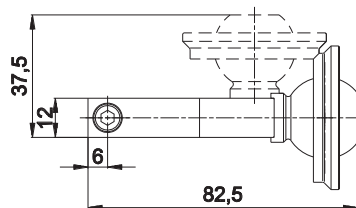


	Tightening torque	Screw
GR8MFGLD	25 Nm	M8 x 18 and M8 x 25

Material: Aluminium EN AW 2011 T6  
 Weight: 0,47 Kg  
 Max static load: 200 Nm

\* Dowel hole interaxes

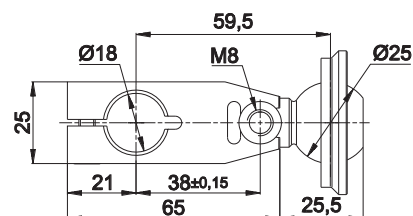
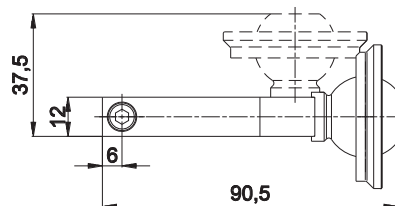
GR8MP12D Proximity mount 12



	Tightening torque	Screw
GR8MP12D	25 Nm	M5 x 14 and M8 x 25

Material: Aluminium EN AW 2011 T6  
 Weight: 0,08 Kg

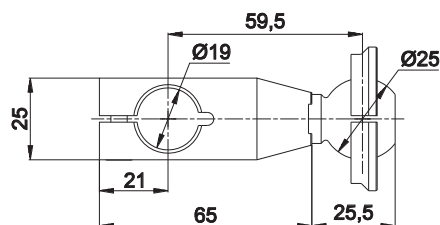
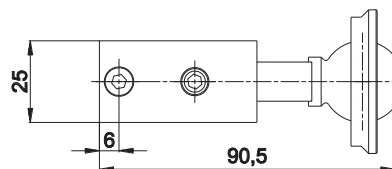
GR8MP18D Proximity mount 18



	Tightening torque	Screw
GR8MP18D	25 Nm	M5 x 18 and M8 x 25

Material: Aluminium EN AW 2011 T6  
 Weight: 0,09 kg

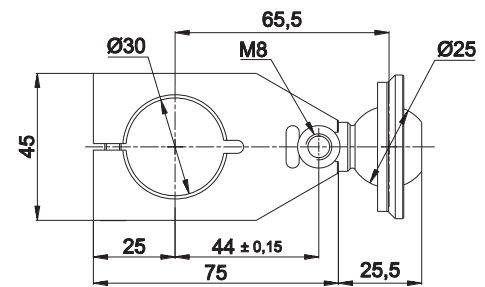
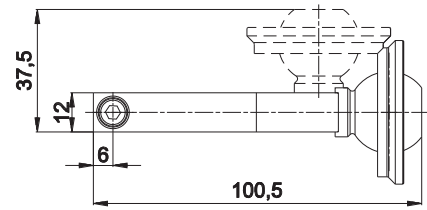
GR8MP19D Vacuum cup adapter 19



	Tightening torque	Screw
GR8MP19D	25 Nm	M5 x 19 and M8 x 25

Material: Aluminium EN AW 2011 T6  
 Weight: 0,13 Kg

GR8MP30D Proximity mount 30



	Tightening torque	Screw
GR8MP30D	25 Nm	M5 x 30 and M8 x 25

Material: Aluminium EN AW 2011 T6  
 Weight: 0,12 kg

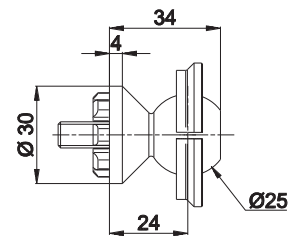


**TECHNICAL CHARACTERISTICS**

The ball adapter offers a versatile solution for the positioning of proximity switches and vacuum cups. It allows an unlimited orientation in space (steplessly  $\pm 45^\circ$ ) for  $\varnothing 30$  mm booms and adjustments due to design changes or during the set-up phase.



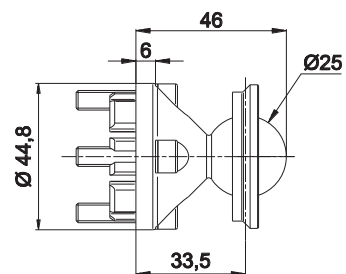
**GR8SCB30D Ball mount - 30**



	Tightening torque	Screw
GR8SCB30D	25 Nm	M8 x 40

Material:	Steel
Weight:	0,17 kg

**GR8SCB45D Ball mount - 45**

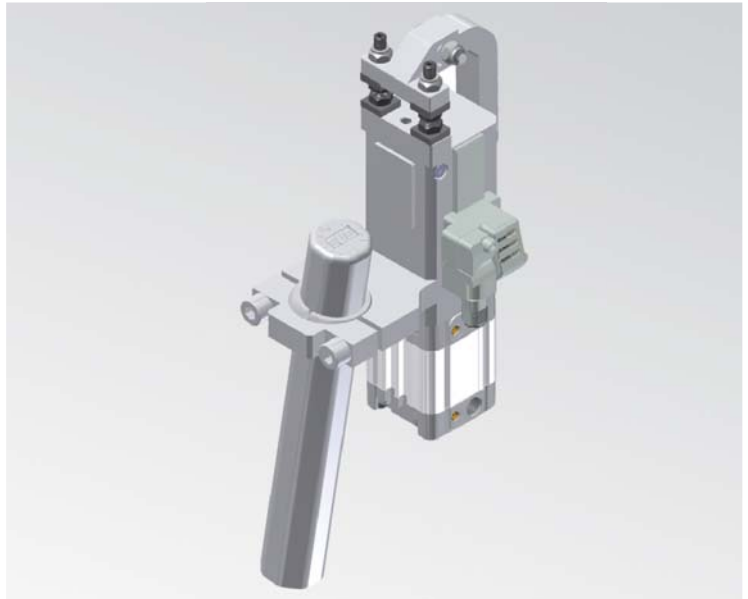


	Tightening torque	Screw
GR8SCB45D	25 Nm	M6 x 25

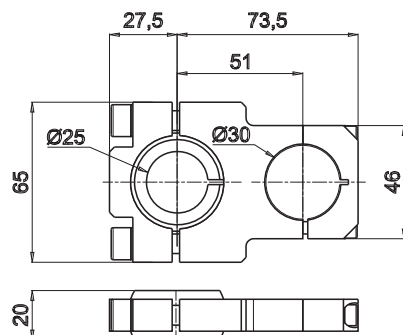
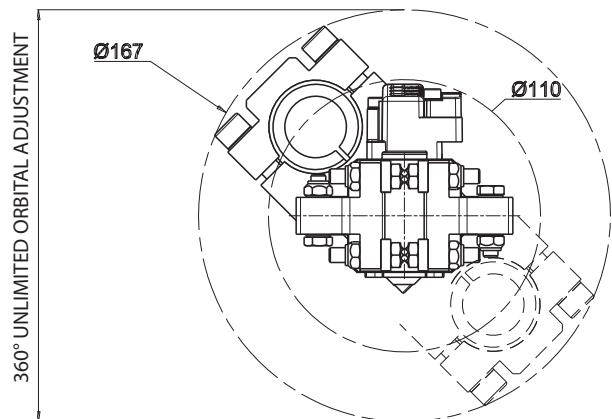
Material:	Steel
Weight:	0,3 kg

**TECHNICAL CHARACTERISTICS**

Plate for LGP Ball Mounting.  
Fully orientable.

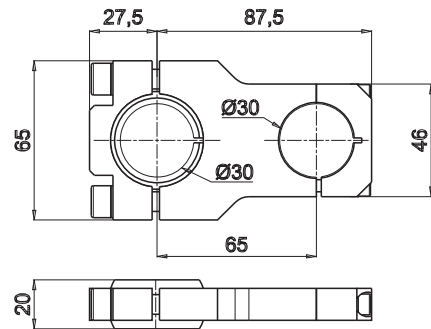
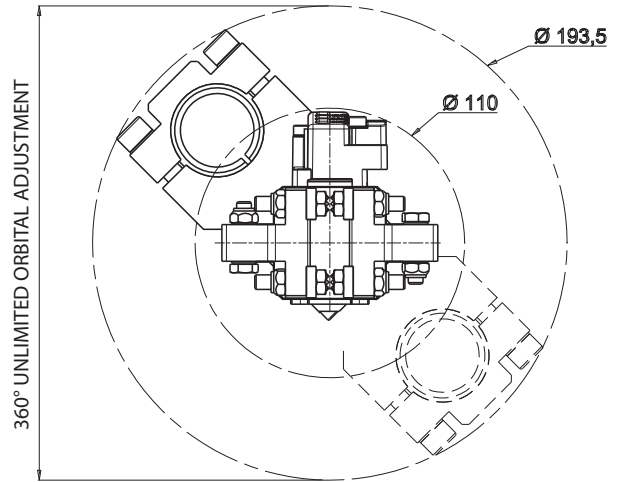


**GR8LGP32MO25 Orbital mount - 360° unlimimited rotation - Ball Ø 25 mm**



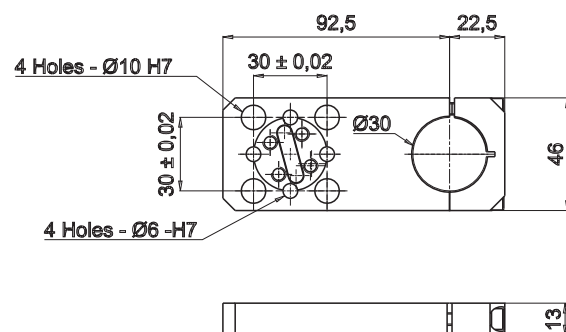
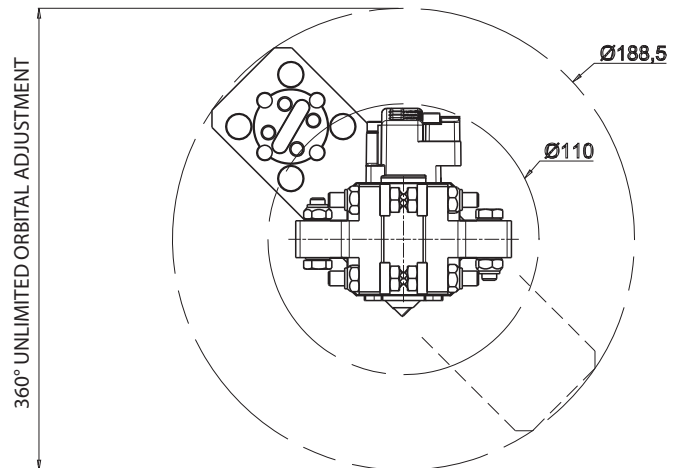
**Material:** Aluminium EN AW 2011 T6  
**Weight:** 0,2 Kg (Bore Ø 32 mm)

GR8LGP32MO30 Orbital mount - 360° unlimited rotation - Ball Ø 30 mm



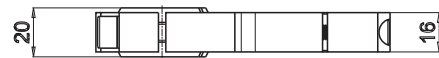
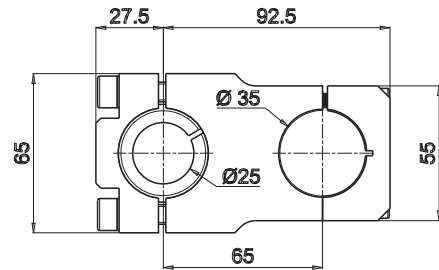
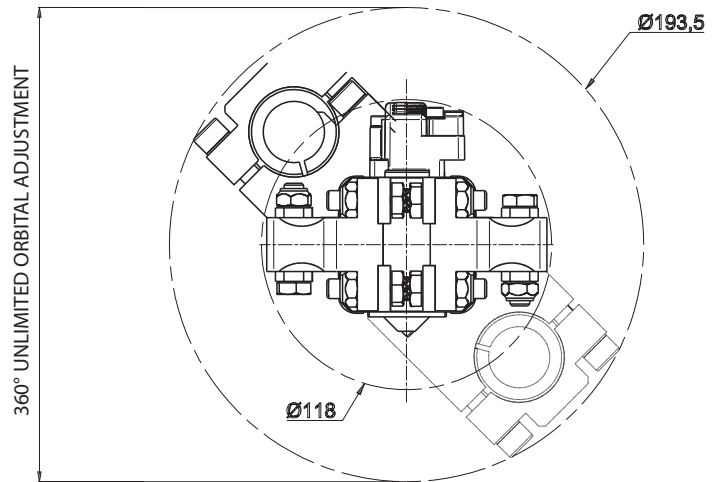
Material:	Aluminium EN AW 2011 T6
Weight:	0,2 kg (Bore Ø 32 mm)

GR8LGP32MP Middle flange mount



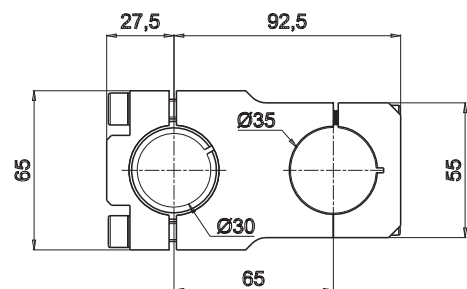
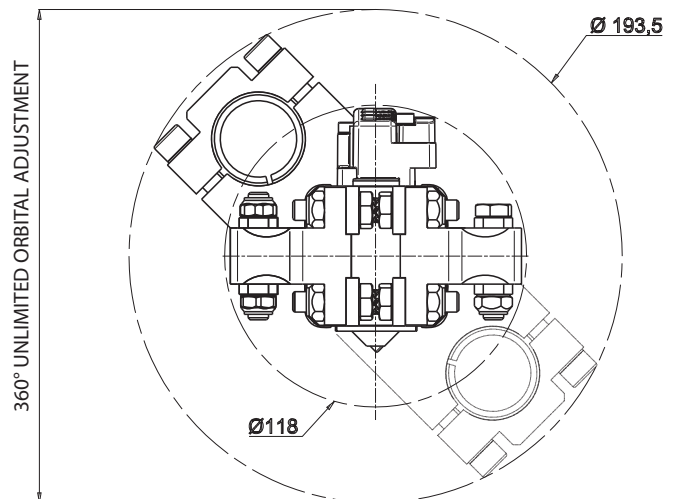
Material:	Aluminium EN AW 2011 T6
Weight:	0,15 Kg (Bore Ø 32 mm)

GR8LGP40MO25 Orbital mount - 360° unlimited rotation - Ball Ø 25 mm



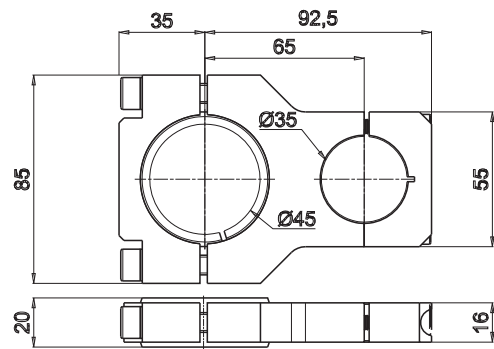
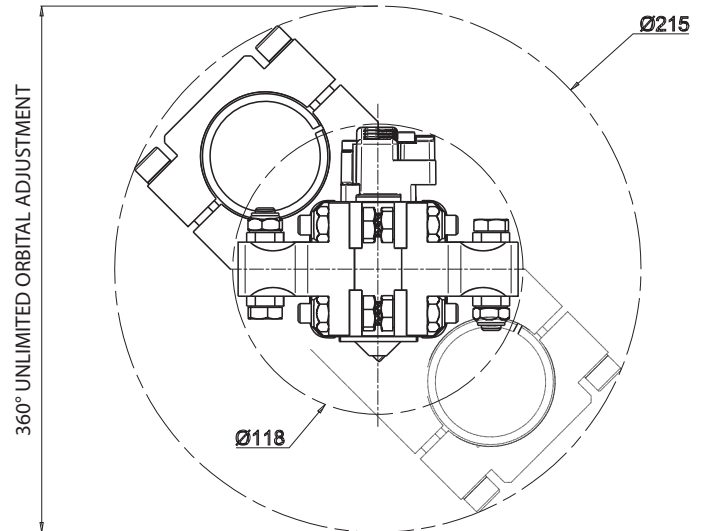
**Material:** Aluminium EN AW 2011 T6  
**Weight:** 0,3 Kg (Bore Ø 40 mm)

GR8LGP40MO30 Orbital mount - 360° unlimited rotation - Ball Ø 30 mm



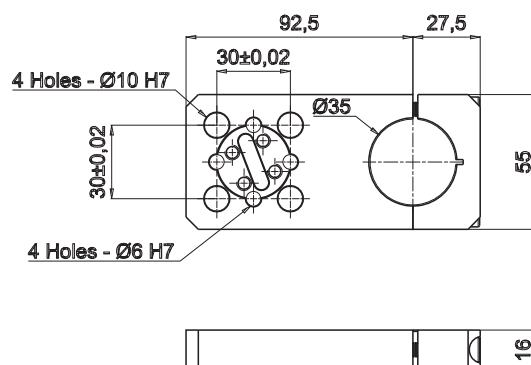
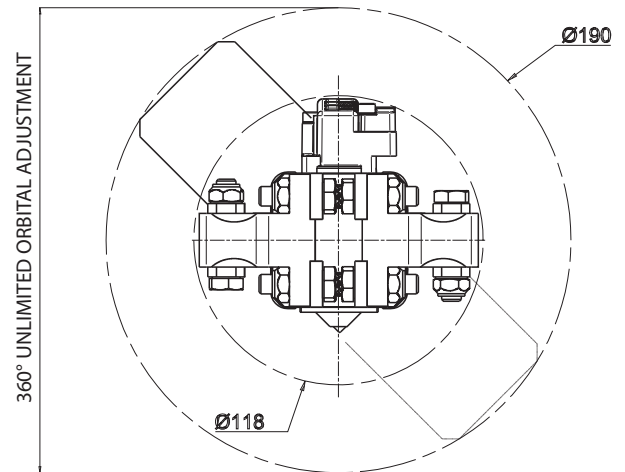
**Material:** Aluminium EN AW 2011 T6  
**Weight:** 0,3 Kg (Bore Ø 40 mm)

GR8LGP40MO45 Orbital mount - 360° unlimited rotation - Ball Ø 45 mm



Material:	Aluminium EN AW 2011 T6
Weight:	0,3 Kg (Bore Ø 40 mm)

GR8LGP40MP Orbital mount - 360° unlimited rotation



Material:	Aluminium EN AW 2011 T6
Weight:	0,2 kg (Bore Ø 40 mm)



## UNIVER S.p.A.

### Headquarters

I - 20128 **Milano**  
Via Eraclito, 31  
Tel. +39 02 25298.1  
Fax +39 02 2575254  
info@univer-group.com  
www.univer-group.com

## UNIVER SERVICE S.r.l.

### Headquarters

I - 20128 **Milano**  
Via Empedocle, 20  
Tel. +39 02 25298.1  
Fax +39 02 25298370  
universervice@universervice.it  
www.universervice.it

### Branch Offices

#### LOMBARDIA

I - 20128 **Milano**  
Via Empedocle, 20  
Tel. +39 02 25298.1  
Fax +39 02 25298370  
universervice@universervice.it

I - 24060 Castelli Calepio **Bergamo**  
Via C. Curotti, 31/33  
Tel. +39 030 7435420  
Fax +39 030 733328  
castellicalepio@universervice.it

I - 22040 Monguzzo **Como**  
Via Valassina, 18  
Tel. +39 031 617922  
Fax +39 031 651222  
monguzzo@universervice.it

#### PIEMONTE/LIGURIA/VALLE D'AOSTA

I - 10071 Borgaro Torinese **Torino**  
Via Veneto, 18  
Tel. +39 011 4501871  
Fax +39 011 4502898  
torino@universervice.it

#### VENETO/FRIULI VENEZIA-GIULIA TRENTINO-ALTO ADIGE

I - 30030 Vigonovo **Venezia**  
Via Prima strada 16/A - Loc. Galta  
Tel. +39 049 9834140  
Fax +39 049 9833972  
vigonovo@universervice.it

#### EMILIA ROMAGNA

I - 40069 Zola Predosa **Bologna**  
Via Guido Rossa, 21  
Tel. +39 051 753907  
Fax +39 051 6184751  
bologna@universervice.it

#### CENTER/SOUTH

I - 40069 Zola Predosa **Bologna**  
Via Guido Rossa, 21  
Tel. +39 051 753907  
Fax +39 051 6184751  
bologna@universervice.it

#### Univer do Brasil S/A

**BRASIL** - 13474-764  
**Americana São Paulo - SP**  
Rua do Polyester, 29  
Distrito Industrial Abdo Najar  
Tel. +55 19 3113-9400  
Fax +55 19 3113-9405  
atendimento@univer.com.br

#### UNIVER FRANCE S.a.s.

**FRANCE** - 68000  
**Colmar**  
1, rue Denis Papin  
Tel. +33 03 89210900  
Fax +33 03 89216850  
info@univer-france.fr

#### UNIVER G.m.b.H.

**GERMANY** - D-65428  
**Rüsselsheim**  
Eisenstraße 51  
Tel. +49 (2208) 9090-1  
Fax +49 (2208) 9090-40  
info@univer-gmbh.de

#### UNIVER NORTH AMERICA

**USA** - 45445  
**Shelby Township, MI 48317**  
Mound Road. Ste. 117  
Tel. 1-844-8 UNIVER  
Fax 001 248.299.0528  
info@univer-group.us

#### UNIVER Polska Sp. z o.o.

**POLAND** - 25-663  
**Kielce**  
ul. K. Olszewskiego 21E  
Tel. +48 41 278 72 53  
Fax +48 41 278 72 54  
univer@univer-group.pl

#### UNIVER S.L.

**SPAIN** - 08210  
**Barbera Del Valles Barcelona**  
Ronda Industria, 26 - 28  
Tel. +34 93 7297360  
Fax +34 93 7297380  
univer@univerweb.com



www.univer-group.com

#### Distributors worldwide:

Get in touch with UNIVER Sales Department  
or visit our website [www.univer-group.com](http://www.univer-group.com)